

SAN NICOLAS ISLAND, CALIFORNIA

RNAV (GPS) RWY 30

SAN NICOLAS ISLAND NOLF (KNSI)

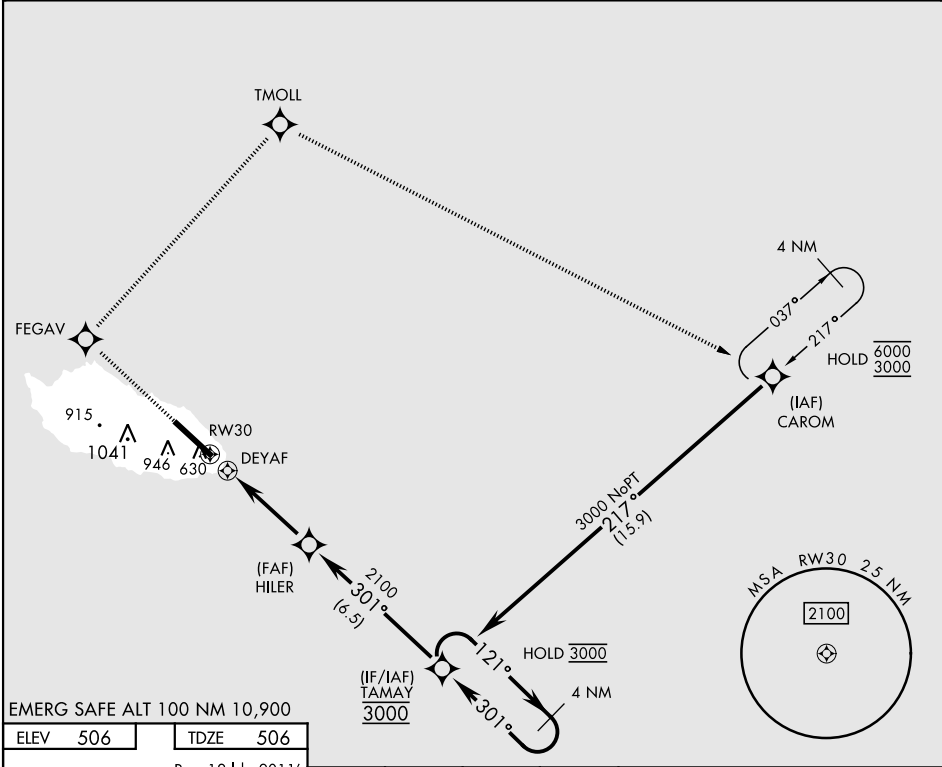
WAAS CH 47673 W30A	APCH CRS 301°	Rwy ldg 10,002 TDZE 506 Arpt Elev 506
--	-------------------------	--

AL-5162 [USN]

RNP APCH
 ▼ * Circling not authorized W of Rwy 12-30.

MISSED APPROACH: Climb to 3000 direct FEGAV, track 031° to TMOLL, track 099° to CAROM and hold.

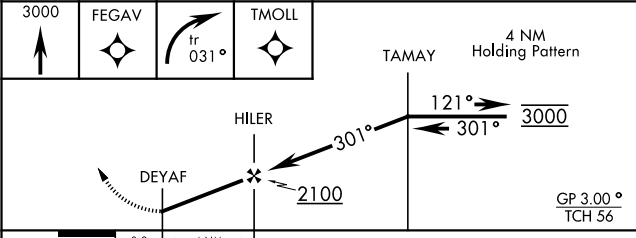
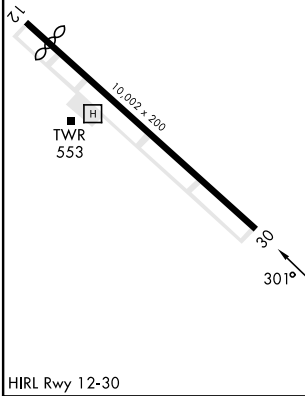
TOWER ★
126.85 379.3



EMERG SAFE ALT 100 NM 10,900

ELEV 506	TDZE 506
----------	----------

Rwy 12 ldg 9011'



CATEGORY	A	B	C	D	E
LPV DA	706- ³ / ₄		200	(200- ³ / ₄)	
LNAV MDA	880-1	374 (400-1)	920-1 ¹ / ₈ 414 (500-1 ¹ / ₈)		980-1 ³ / ₈ 474 (500-1 ³ / ₈)
C CIRCLING*	880-1 374 (400-1)	960-1 454 (500-1)	960-1 ¹ / ₂ 454 (500-1 ¹ / ₂)	1060-2 554 (600-2)	

SAN NICOLAS ISLAND, CALIFORNIA
 Orig 18MAY23

33°14'N-119°27'W

SAN NICOLAS ISLAND NOLF (KNSI)

RNAV (GPS) RWY 30

SW-3, 28 NOV 2024 to 26 DEC 2024

SW-3, 28 NOV 2024 to 26 DEC 2024