

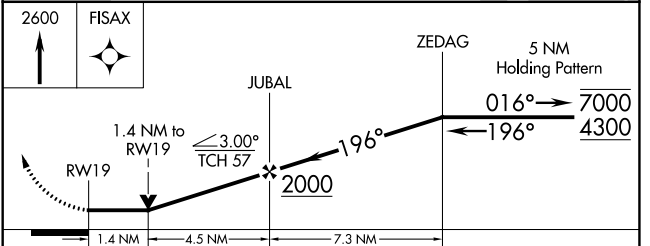
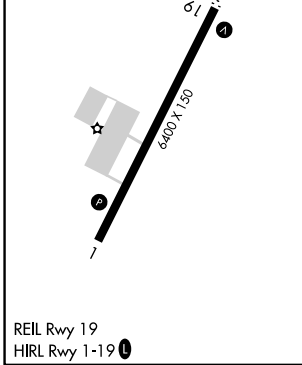
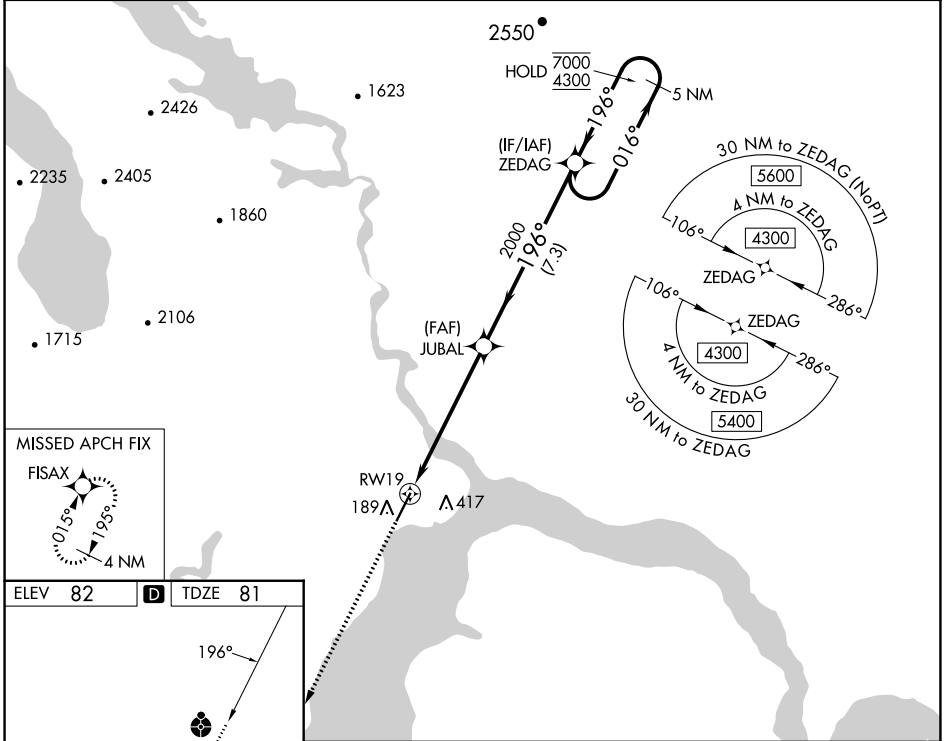
APP CRS	Rwy Idg	6400
196°	TDZE	81
	Apt Elev	82

RNAV (GPS) Z RWY 19

DILLINGHAM (DLG)(PADL)

RNP APCH - GPS.	ODALS	MISSED APPROACH: Climb to 2600 direct FISAX and hold.
<p>⚠ Circling NA east of Rwy 1-19. When local altimeter setting not received, use Manokotak altimeter setting and increase all MDAs 40 feet and LNAV visibility Cat C/D 1/8 SM. For inop ALS, increase LNAV Cat C/D visibility to 1 3/8 SM. Inop table does not apply to LNAV Cats A/B. Inop table does not apply when using Manokotak altimeter setting. Rwy 19 helicopter visibility reduction below 3/4 SM NA. VDP NA when using Manokotak altimeter setting.</p>		

AFIS 125.0	ANCHORAGE CENTER 132.75 282.35	DILLINGHAM RADIO 123.6 (CTAF) 0
----------------------	--	---



CATEGORY	A	B	C	D
LNAV MDA	560-1	479 (500-1)	560-1 1/4	479 (500-1 1/4)
C CIRCLING	560-1	478 (500-1)	700-1 3/4 618 (700-1 3/4)	700-2 618 (700-2)

AK, 31 OCT 2024 to 26 DEC 2024

AK, 31 OCT 2024 to 26 DEC 2024