


WAAS CH 72812 W 35A	APP CRS 354°	Rwy Idg 6500
		TDZE 844
		Apt Elev 846

RNAV (GPS) RWY 35


MONROE COUNTY (BMG)

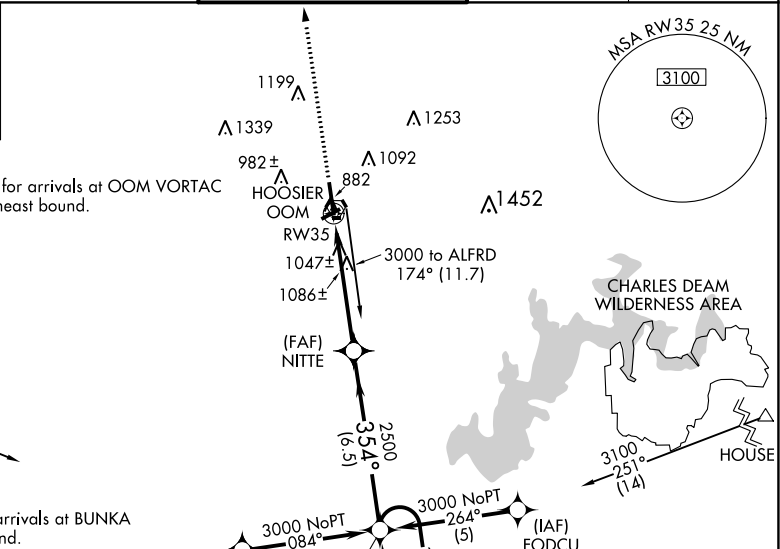
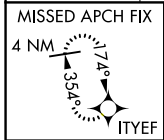
▼ For uncompensated Baro-VNAV systems, LNAV/VNAV NA below -16°C (4°F) or above 47°C (116°F). DME/DME RNP-0.3 NA. When local altimeter setting not received, use Terre Haute Rgnl altimeter setting; increase LPV DA to 1165, LNAV/VNAV DA to 1465 and all MDA 140 feet and increase LPV all Cats, LNAV Cat C, D visibility ¼ SM, LNAV/VNAV all Cats and Circling C and D visibility ½ SM. For inoperative MALS/R when using Terre Haute Rgnl altimeter setting; increase LPV all Cats visibility ½ mile. Baro-VNAV and VDP NA when using Terre Haute Rgnl altimeter setting. Circling to Rwy 6/24 NA at night.

MALS/R

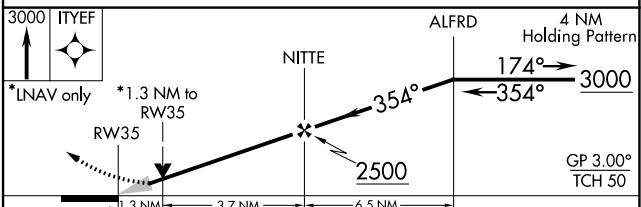
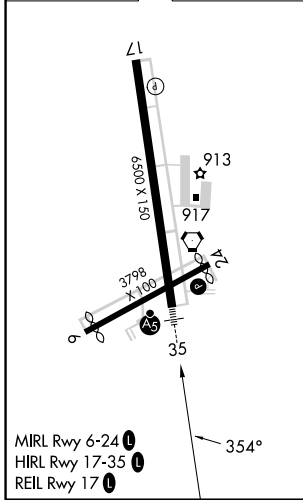


MISSED APPROACH:
Climb to 3000 direct ITYEF and hold.

ASOS 134.525	HULMAN APP CON 128.025 339.8	BLOOMINGTON TOWER * 120.775 (CTAF) 	GND CON 121.9	UNICOM 122.95
------------------------	--	--	-------------------------	-------------------------



ELEV 846	TDZE 844
----------	----------



CATEGORY	A	B	C	D
LPV DA		1044-1½	200 (200-1½)	
LNAV/VNAV DA		1344-1¼	500 (500-1¼)	
LNAV MDA	1300-1½	456 (500-½)	1300-¾ 456 (500-¾)	1300-1 456 (500-1)
CIRCLING	1380-1 534 (600-1)	1400-1 554 (600-1)	1400-1½ 554 (600-1½)	1620-2½ 774 (800-2½)