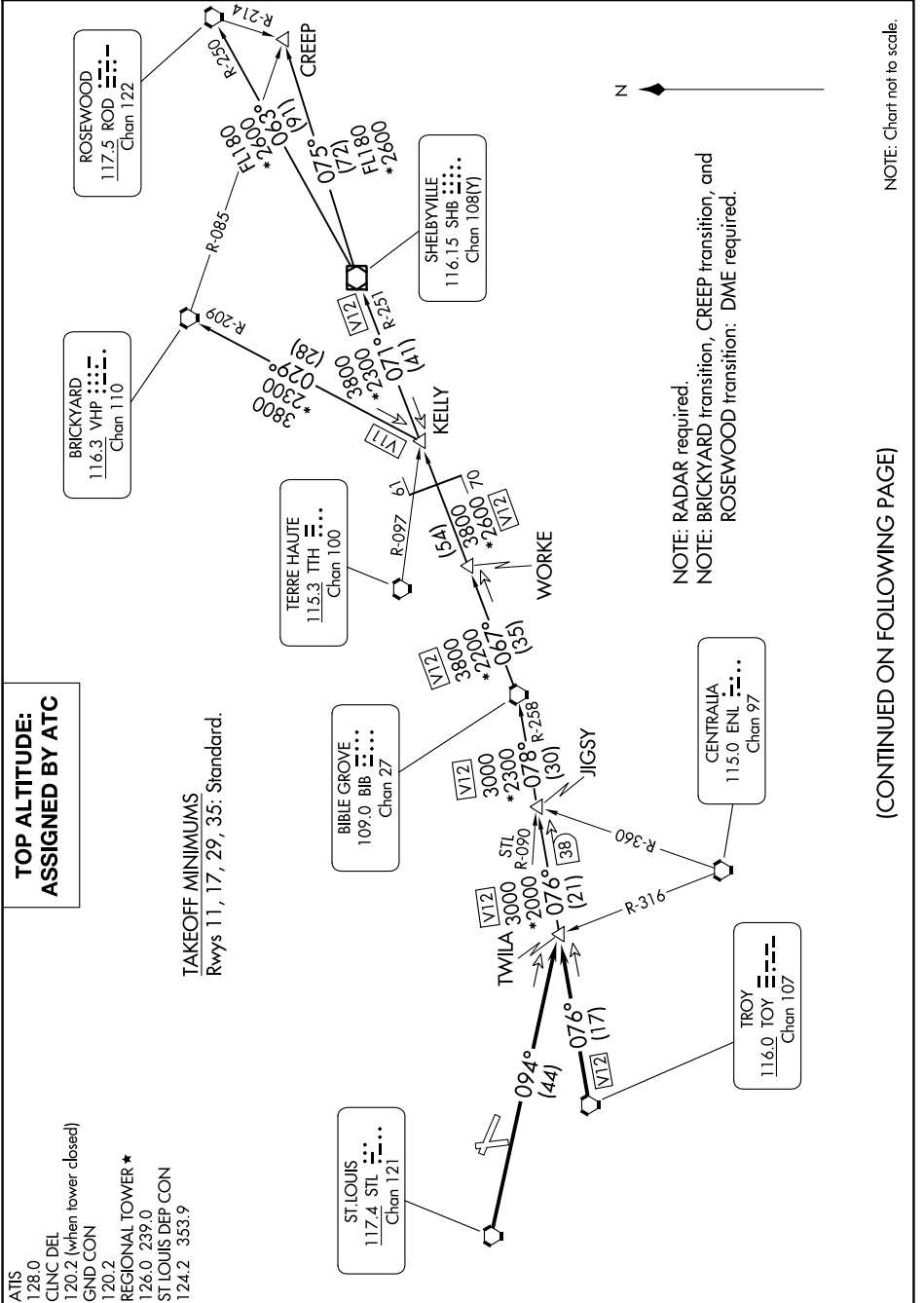


EC-3, 28 NOV 2024 to 26 DEC 2024

### TOP ALTITUDE: ASSIGNED BY ATC

- ATIS 128.0
- CLNC DEL 120.2 (when tower closed)
- GND CON 120.2
- REGIONAL TOWER ★ 126.0 239.0
- ST LOUIS DEP CON 124.2 353.9

**TAKEOFF MINIMUMS**  
Rwys 11, 17, 29, 35: Standard.



NOTE: RADAR required.  
NOTE: BRICKYARD transition, CREEP transition, and ROSEWOOD transition: DME required.

NOTE: Chart not to scale.

(CONTINUED ON FOLLOWING PAGE)

EC-3, 28 NOV 2024 to 26 DEC 2024