

LOC/DME I-LEr	APP CRS	Rwy Idg	<b>7100</b>
<b>109.7</b>	<b>340°</b>	TDZE	<b>1232</b>
Chan <b>34</b>		Apt Elev	<b>1232</b>

# ILS or LOC/DME RWY 34

BRainerd LAKES RGnL (BRD)

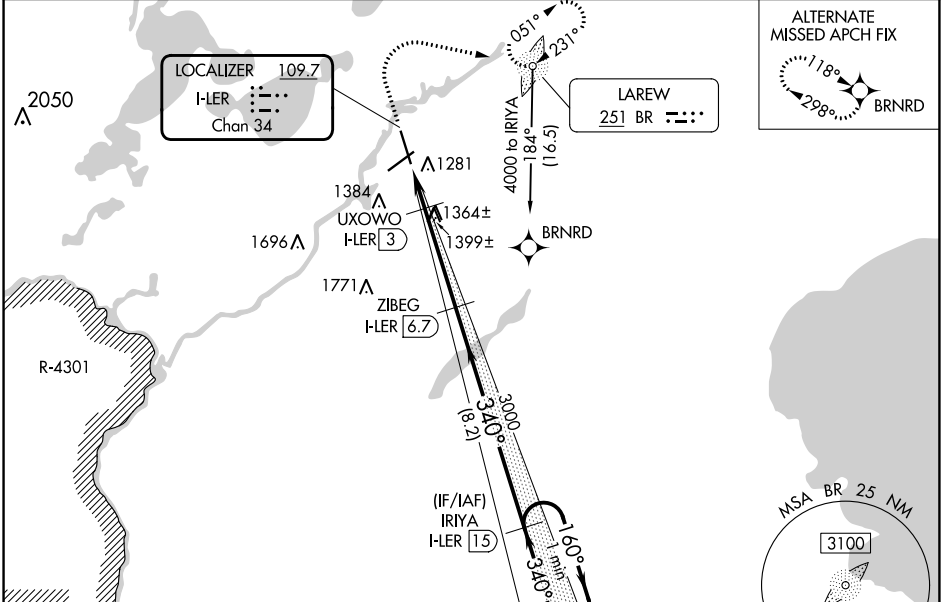
DME required. ADF required.  
 RNP APCH-GPS. from GOLLF.

**MALSr**

**MISSED APPROACH:** Climb to 1700 then climbing right turn to 4000 direct BR LOM, continue climb-in-hold to 4000.

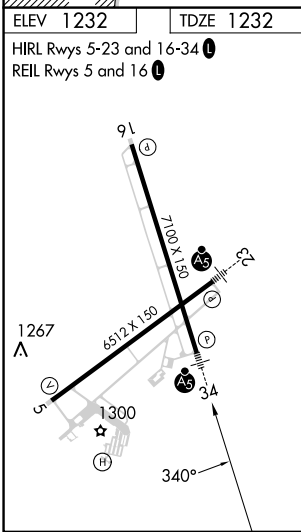
VDP NA with Aikin altimeter setting. When local altimeter setting not received, use Aikin altimeter setting: increase all DA to 1484;  
 NA increase all MDAs 60 feet and visibility S-LOC 34 Cat C/D ¼ SM and visibility Circling Cat D ¼ SM.

ASOS <b>126.775</b>	MINNEAPOLIS CENTER <b>118.05 239.0</b>	UNICOM <b>122.7(CTAF) 0</b>
------------------------	---	--------------------------------



NC-1, 28 NOV 2024 to 26 DEC 2024

NC-1, 28 NOV 2024 to 26 DEC 2024



1700	4000	BR	ZIBEG I-LEr [6.7]	IRIYA I-LEr [15]	One Minute Holding Pattern
*LOC only	*H-LEr	UXOWO I-LEr [3]	3000	340°	160° → 4000
I-LEr [1.3]	[2.4]		1820*	340°	3000
1.1 NM	0.6	3.7 NM	8.2 NM		GS 3.00° TCH 46
CATEGORY	A	B	C	D	
S-ILS 34	1432-1/2		200 (200-1/2)		
S-LOC 34	1620-1/2 388 (400-1/2)		1620-5/8 388 (400-5/8)		
<b>C</b> CIRCLING	1760-1 528 (600-1)		1760-1 1/2 528 (600-1 1/2)		1860-2 628 (700-2)