

FORT NOVOSEL, ALABAMA

COPTER RNAV (GPS) RWY 17

APCH CRS	Rwy Idg	476
176°	TDZE	318
	Arpt Elev	318

AL-5183 [USA]

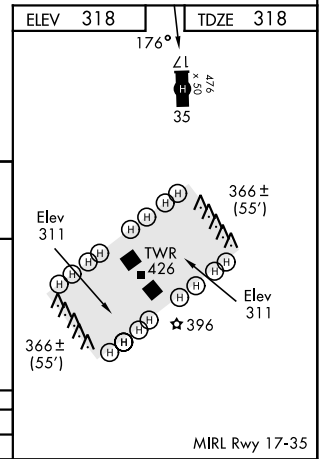
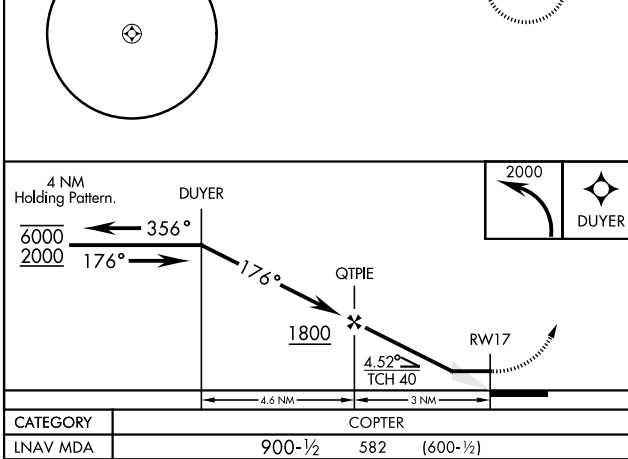
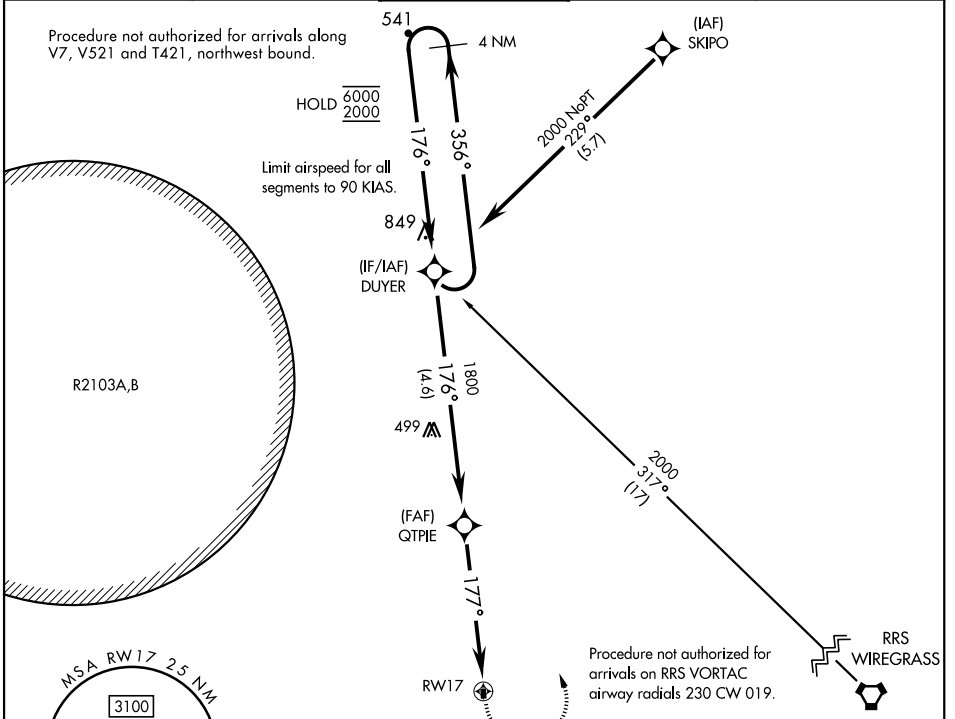
HANCHEY AHP (STRIP) (KHEY)

RNP APCH - GPS

▼ Use CAIRNS altimeter setting, when not received,
▲ use LOWE altimeter setting.

MISSED APPROACH: Climbing left turn to 2000 direct DUYER and hold.

ATIS ★	CAIRNS APP CON	TOWER ★	GND CON	CAIRNS CLNC DEL
141.375	125.4 327.125	140.5 387.85	142.55 225.575	118.075 380.1



FORT NOVOSEL, ALABAMA
Amdt 2 20APR23

31° 21' N-85° 39' W

HANCHEY AHP (STRIP) (KHEY)

COPTER RNAV (GPS) RWY 17

SE-4, 28 NOV 2024 to 26 DEC 2024

SE-4, 28 NOV 2024 to 26 DEC 2024