

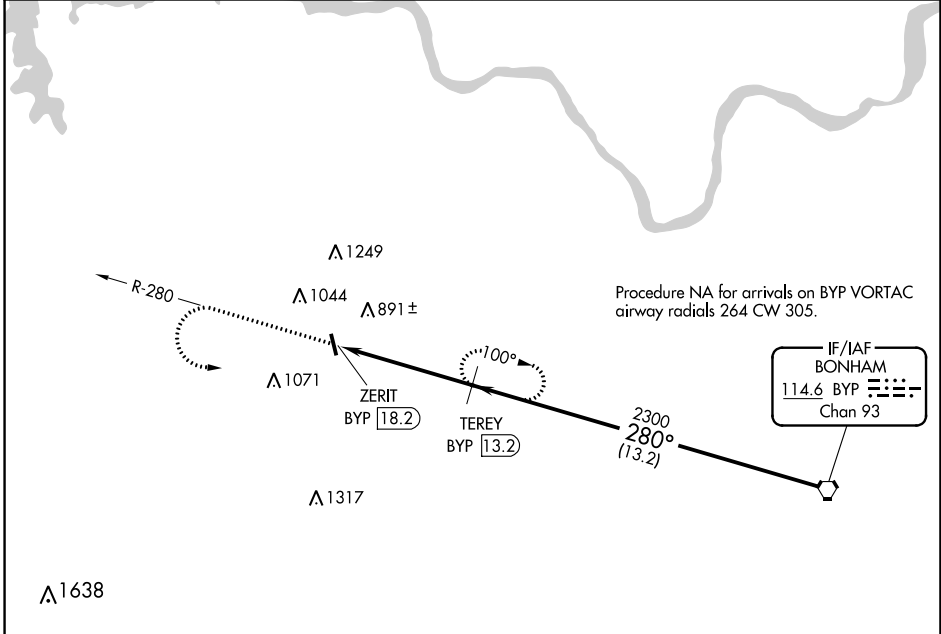
VORTAC BYP 114.6 Chan 93	APP CRS 280°	Rwy Idg TDZE Apt Elev N/A N/A 746
--	------------------------	---

VOR/DME-A
SHERMAN MUNI (SWI)

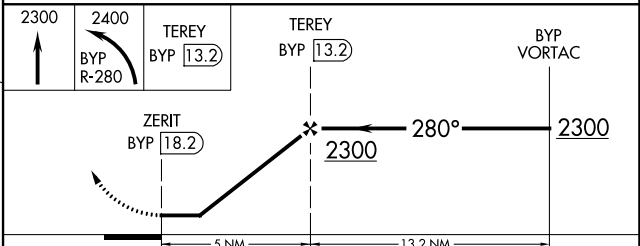
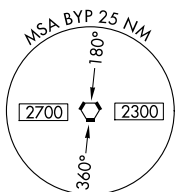
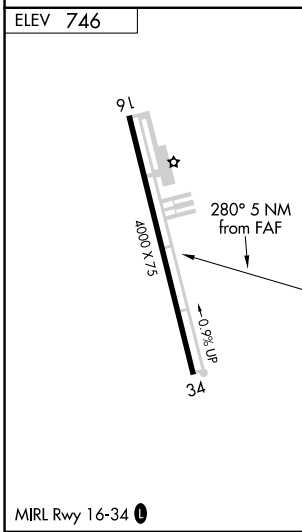
⚠ Use Sherman/Denison altimeter setting, when not received, use Dallas Love Fld altimeter setting and increase all MDA 140 feet, increase visibility Cat B ¼ mile, Cat C ½ mile, and Cat D ¾ mile. Procedure NA at night.
⚠ NA Helicopter visibility reduction below 1 SM NA.

MISSED APPROACH: Climb to 2300, then climbing left turn to 2400 on BYP R-280 to TEREY/13.2 DME and hold.

FORT WORTH CENTER 124.75 323.0	UNICOM 122.8 (CTAF) 0
--	---------------------------------



IF/IAF
BONHAM
114.6 BYP Chan 93



CATEGORY	A	B	C	D
0 CIRCLING	1300-1 554 (600-1)	1420-1 674 (700-1)	1620-2½ 874 (900-2½)	1620-2¾ 874 (900-2¾)

SC-2, 28 NOV 2024 to 26 DEC 2024

SC-2, 28 NOV 2024 to 26 DEC 2024