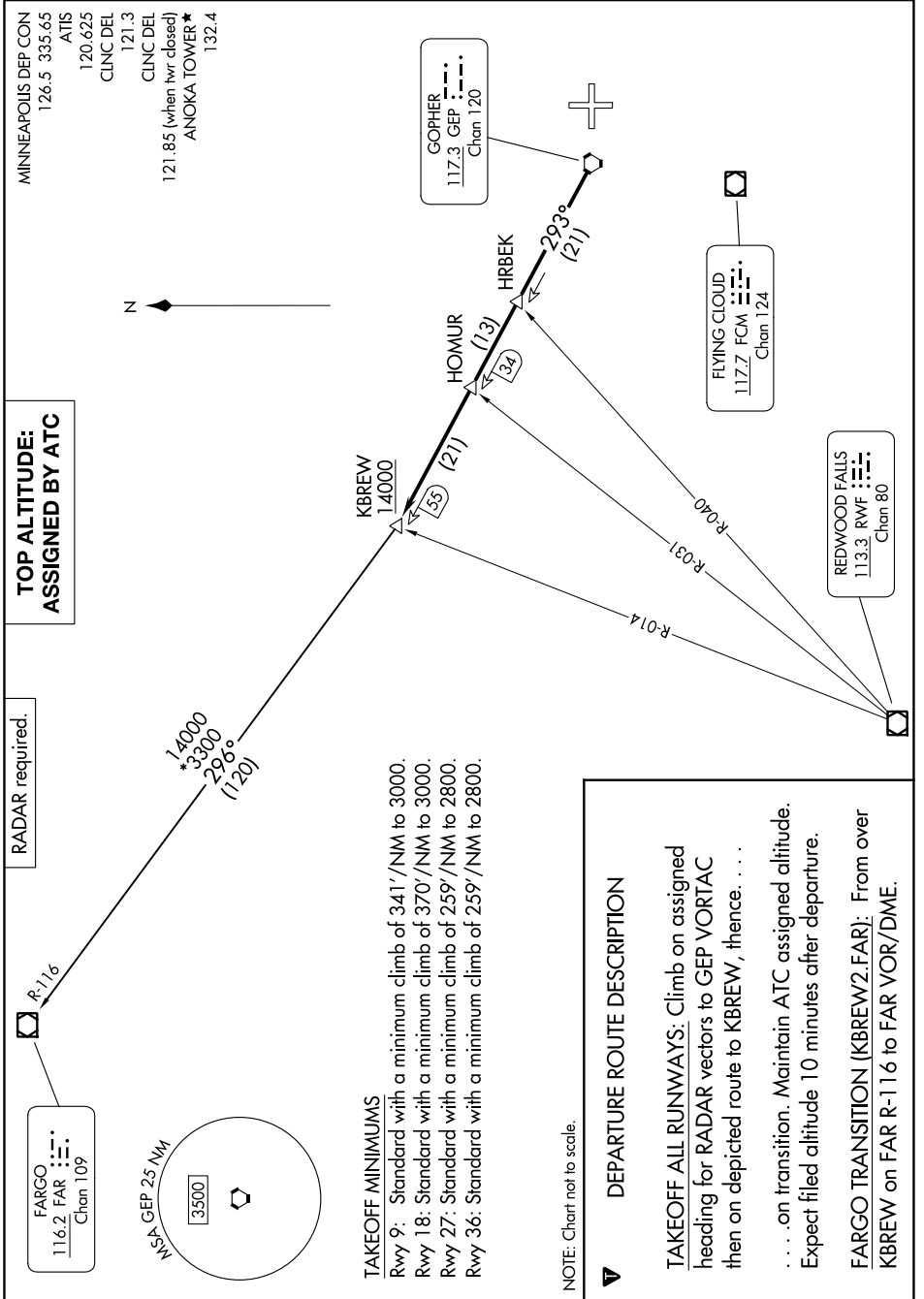


(KBREW2.KBREW) 24137
KBREW TWO DEPARTURE

AL-5202 (FAA)

ANOKA COUNTY/BLAINE (JANES FLD) (ANE)
 MINNEAPOLIS, MINNESOTA

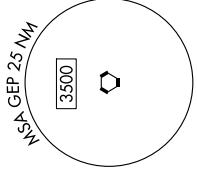
NC-1, 28 NOV 2024 to 26 DEC 2024



**TOP ALTITUDE:
 ASSIGNED BY ATC**

RADAR required.

FARGO
 116.2 FAR
 Chan 109



TAKEOFF MINIMUMS

- Rwy 9: Standard with a minimum climb of 341' /NM to 3000.
- Rwy 18: Standard with a minimum climb of 370' /NM to 3000.
- Rwy 27: Standard with a minimum climb of 259' /NM to 2800.
- Rwy 36: Standard with a minimum climb of 259' /NM to 2800.

NOTE: Chart not to scale.

DEPARTURE ROUTE DESCRIPTION

TAKEOFF ALL RUNWAYS: Climb on assigned heading for RADAR vectors to GEP VORTAC then on depicted route to KBREW, thence. . . .

. . . .on transition. Maintain ATC assigned altitude. Expect filed altitude 10 minutes after departure.

FARGO TRANSITION (KBREW2.FAR): From over KBREW on FAR R-116 to FAR VOR/DME.

NC-1, 28 NOV 2024 to 26 DEC 2024

(KBREW2.KBREW) 16MAY24
KBREW TWO DEPARTURE

ANOKA COUNTY/BLAINE (JANES FLD) (ANE)
 MINNEAPOLIS, MINNESOTA