

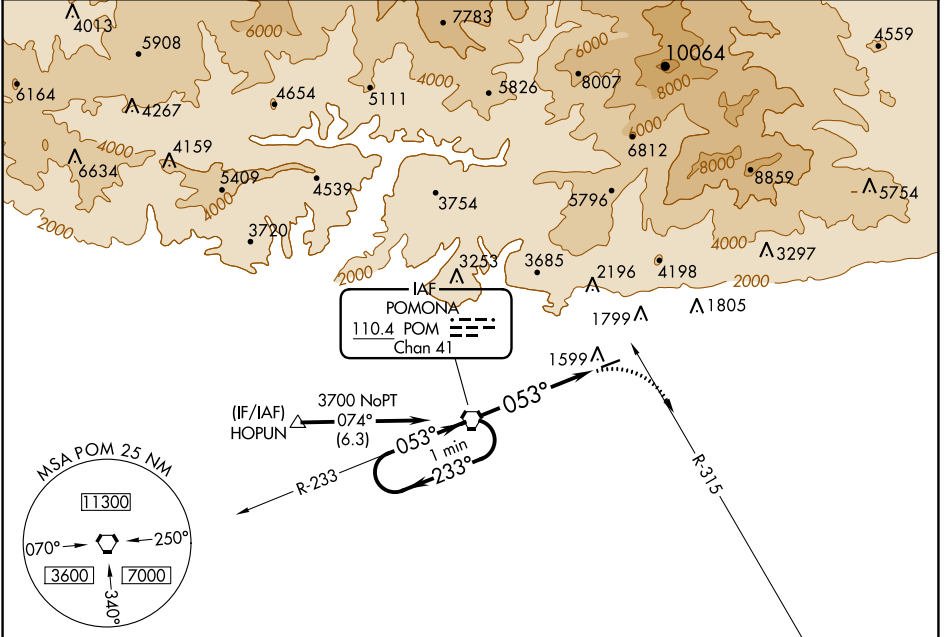
VORTAC POM <b>110.4</b> Chan <b>41</b>	APP CRS <b>053°</b>	Rwy Idg TDZE Apt Elev <b>1444</b>	<b>N/A</b> <b>N/A</b> <b>1444</b>
--	------------------------	--	---

# VOR-A CABLE (CCB)

**NA** Circling NA northwest of Rwy 6-24. Procedure NA at night.  
When local altimeter setting not received, use Ontario altimeter setting and increase all MDA 100 feet and all visibilities ½ SM.  
Rwy 24 helicopter visibility reduction below 1 SM NA.

**MISSED APPROACH:** Climbing right turn to 4000 via heading 105° and PDZ R-315 to PDZ VORTAC and hold.

AWOS-3P <b>119.525</b>	SOCAL APP CON <b>125.5 349.0</b>	UNICOM <b>123.0 (CTAF) 0</b>
---------------------------	-------------------------------------	---------------------------------



SW-3, 28 NOV 2024 to 26 DEC 2024

SW-3, 28 NOV 2024 to 26 DEC 2024

ELEV 1444

MIRL Rwy 6-24

FAF to MAP 5.1 NM					
Knots	60	90	120	150	180
Min:Sec	5:06	3:24	2:33	2:02	1:42

One Minute Holding Pattern

VGSI and descent angles not coincident (VGSI Angle 4.00/TCH 34).

POM VORTAC

4000 PDZ R-315

4.22° TCH 40

5.1 NM

3700	← 233°	→ 053°	053°	POM (5.1)
------	--------	--------	------	-----------

CATEGORY	A	B	C	D
<b>C</b> CIRCLING	2240-1	796 (800-1)	2240-2¼ 796 (800-2¼)	NA