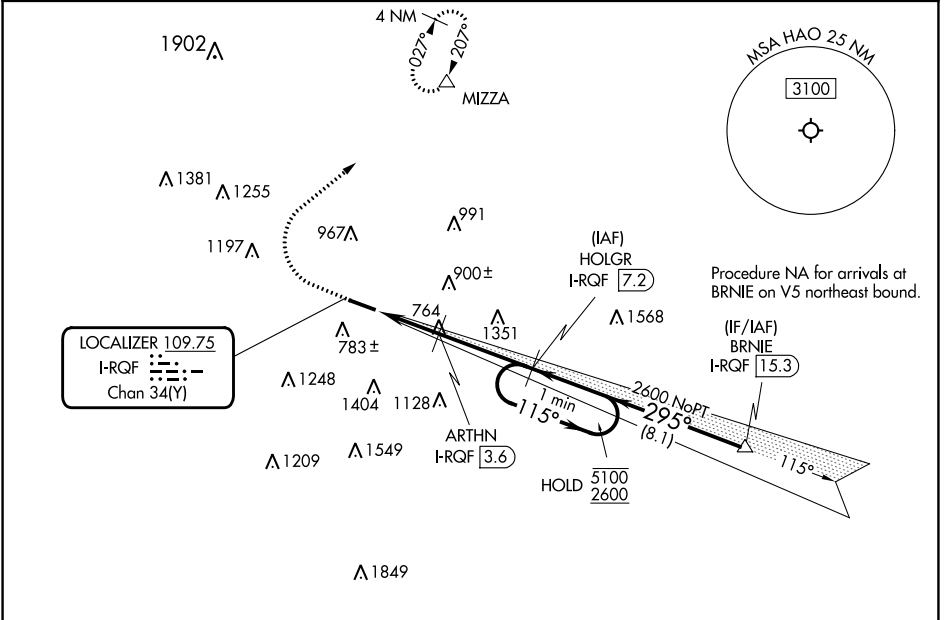


LOC/DME I-RQF <b>109.75</b> Chan <b>34 (Y)</b>	APP CRS <b>295°</b>	Rwy Idg TDZE Apt Elev	<b>5500</b> <b>619</b> <b>632</b>
--	------------------------	-----------------------------	---

# ILS or LOC RWY 29

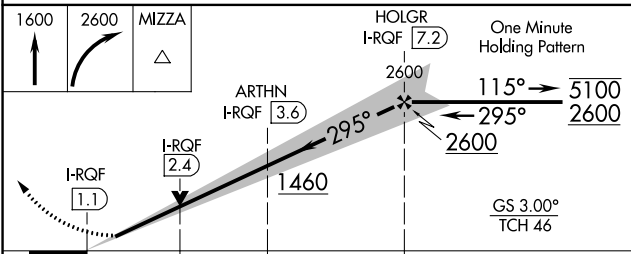
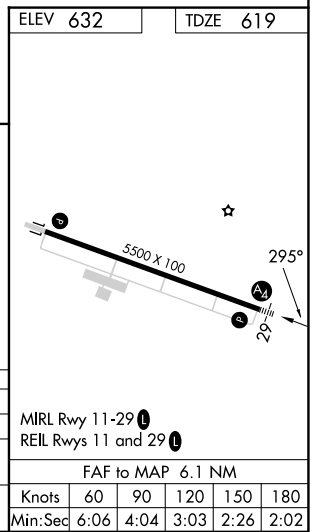
BUTLER COUNTY RGNL/HOGAN FLD (HAO)

RNP APCH - GPS DME required.		MALS	MISSED APPROACH: Climb to 1600 then climbing right turn to 2600 direct MIZZA and hold.
Inop table does not apply to S-ILS 29. 			
ASOS <b>121.425</b>	CINCINNATI APP CON <b>121.0 254.25</b>	CLNC DEL <b>126.25</b>	UNICOM <b>123.05 (CTAF) 0</b>



EC-2, 28 NOV 2024 to 26 DEC 2024

EC-2, 28 NOV 2024 to 26 DEC 2024



CATEGORY	A	B	C	D
S-ILS 29		819- <sup>3</sup> / <sub>4</sub>	200 (200- <sup>3</sup> / <sub>4</sub> )	
S-LOC 29	1080- <sup>3</sup> / <sub>4</sub>	461 (500- <sup>3</sup> / <sub>4</sub> )	1080-1 <sup>1</sup> / <sub>8</sub>	461 (500-1 <sup>1</sup> / <sub>8</sub> )
CIRCLING	1280-1	648 (700-1)	1300-1 <sup>3</sup> / <sub>4</sub> 668 (700-1 <sup>3</sup> / <sub>4</sub> )	1760-3 1128 (1200-3)