

WAAS CH 50212 W27A	APP CRS 270°	Rwy Idg TDZE Apt Elev	6501 1230 1230
--	------------------------	-----------------------------	---

RNAV (GPS) RWY 27

GOGEBIC/IRON COUNTY (IWD)

RNP APCH - GPS.

⚠ Inoperative table does not apply to LPV and LNAV/VNAV all Cats and LNAV Cats A and B. For uncompensated Baro-VNAV systems, LNAV/VNAV NA below -17°C or above 46°C. When using Ashland altimeter setting: inop table does not apply to LNAV/VNAV all Cats and LNAV Cat A. When using Ashland altimeter setting: for inoperative MALS, increase LNAV Cat B visibility to 1¼ mile. Baro-VNAV and VDP NA when using Ashland altimeter setting. When local altimeter setting not received, use Ashland altimeter setting: increase LPV DA to 1562 feet; increase LNAV/VNAV DA to 2298 feet and Cat C visibility ¼ SM; increase all MDA 140 feet and LNAV Cat C/D visibility ½ SM and Circling Cat B visibility ¼ SM.

MALS

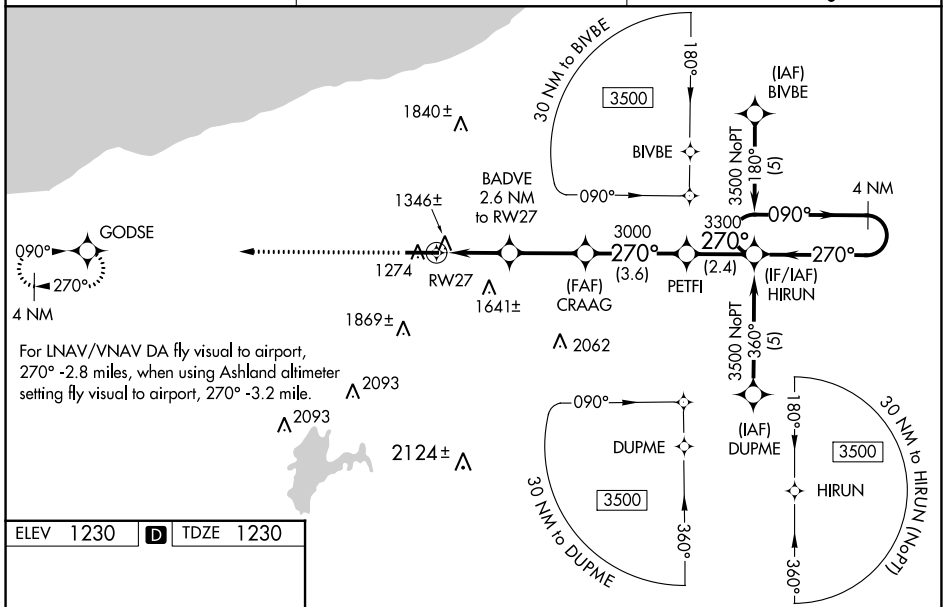


MISSED APPROACH:
Climb to 3500 direct GODSE and hold.

AWOS-3PT
125.175

MINNEAPOLIS CENTER
133.55

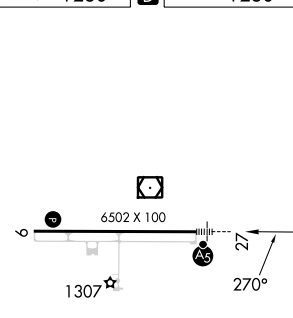
UNICOM
122.8 (CTAF)



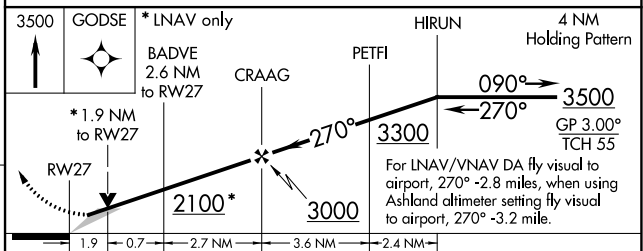
EC-1, 28 NOV 2024 to 26 DEC 2024

EC-1, 28 NOV 2024 to 26 DEC 2024

ELEV 1230 **D** TDZE 1230



REIL Rwy 9 **Ⓛ**
HIRL Rwy 9-27 **Ⓛ**



CATEGORY	A	B	C	D
LPV DA	1430-1		200 (200-1)	
LNAV/VNAV DA	2166-2	936 (1000-2)	2166-2¾ 936 (1000-2¾)	2166-3 936 (1000-3)
LNAV MDA	1900-1	670 (700-1)	1900-1¼ 670 (700-1¼)	1900-1½ 670 (700-1½)
CIRCLING	2100-1¼	870 (900-1¼)	2200-3 970 (1000-3)	2220-3 990 (1000-3)