

IRONWOOD, MICHIGAN

AL-5213 (FAA)

24025

VOR/DME IWD 108.8 Chan 25	APP CRS 079°	Rwy ldg TDZE 1230 Apt Elev 1230
--	------------------------	---

VOR RWY 9

GOGEBIC/IRON COUNTY (IWD)

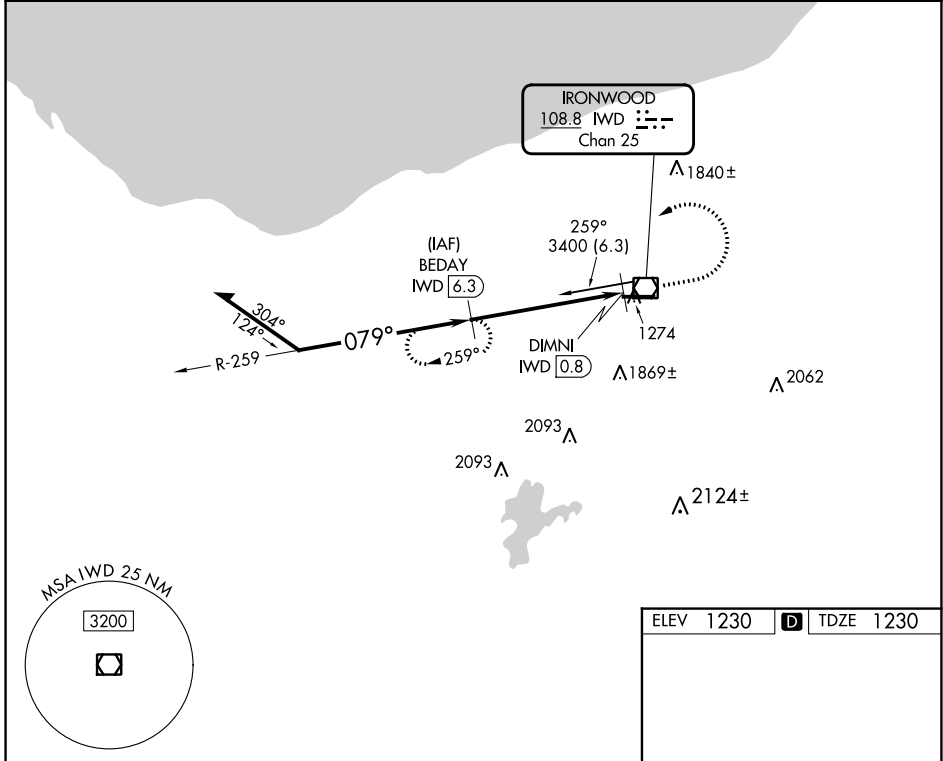
DME required.

⚠ Rwy 9 helicopter visibility reduction below 1 SM NA. When local altimeter setting not received, use Ashland altimeter setting: increase all MDA 140 feet and S-9 Cat C visibility ¼ SM, Cat D visibility ½ SM and Circling Cat B visibility ¼ SM.

⚠ -27°C

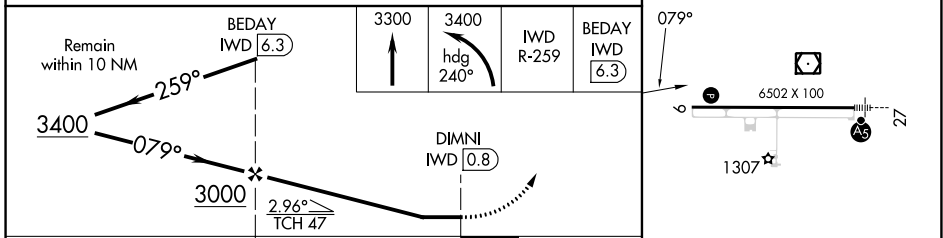
MISSED APPROACH: Climb to 3300 then climbing left turn to 3400 on heading 240° and IWD R-259 to BEDAY/6.3 DME and hold.

AWOS-3PT 125.175	MINNEAPOLIS CENTER 133.55	UNICOM 122.8 (CTAF)
----------------------------	-------------------------------------	-------------------------------



EC-1, 28 NOV 2024 to 26 DEC 2024

EC-1, 28 NOV 2024 to 26 DEC 2024



CATEGORY	A	B	C	D
S-9	1740-1	510 (600-1)	1740-1½	510 (600-1½)
CIRCLING	2100-1¼	870 (900-1¼)	2200-3 970 (1000-3)	2220-3 990 (1000-3)

REIL Rwy 9 **Ⓛ**
HIRL Rwy 9-27 **Ⓛ**

IRONWOOD, MICHIGAN
Amdt 13B 15JUL21

46°32'N-90°08'W

VOR RWY 9

GOGEBIC/IRON COUNTY (IWD)