

CAMP RIPLEY, MINNESOTA

ILS or LOC RWY 31

LOC I-RYM 111.1 Chan 48	APCH CRS 312°	Rwy Idg TDZE 1146 Arprt Elev 1150
---	-------------------------	---

[USA]

RAY S. MILLER AAF (KRYM)

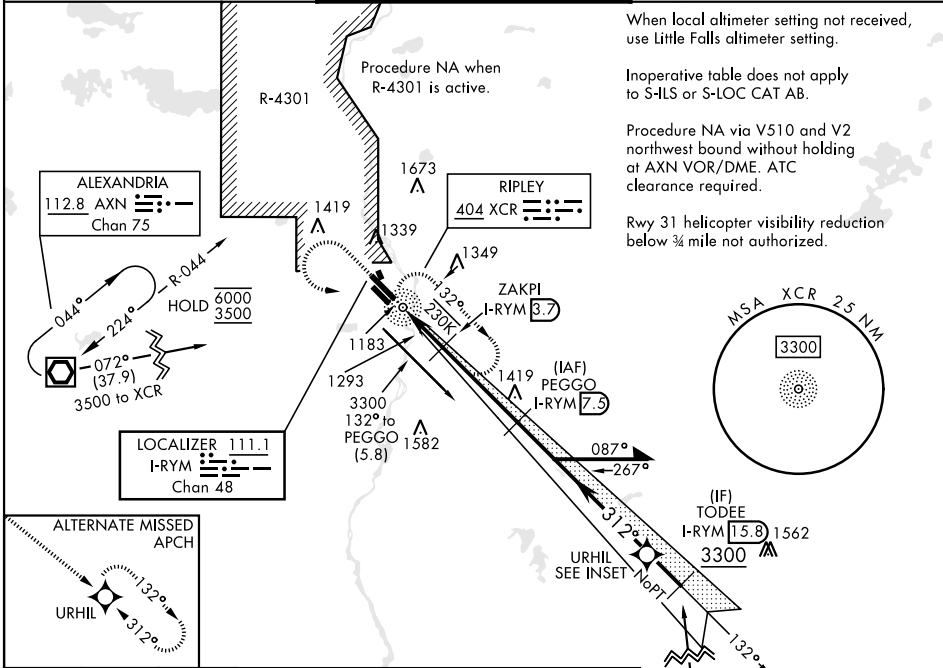
ADF, DME required. RADAR required for entry at STC VOR/DME.

- ▼ * When ALS inop, increase CAT CD vis to 1¼ miles.
- ▲ ** When ALS inop, increase CAT CD vis to 1¾ miles.



MISSED APPROACH: Climb to 2000, then climbing left turn to 3500 direct XCR NDB and hold. Continue climb in hold to 3500.

MINNEAPOLIS CENTER 118.05 239.0	MILLER TOWER ★ 126.2 0 254.4	CLNC DEL 126.2
---	--	--------------------------

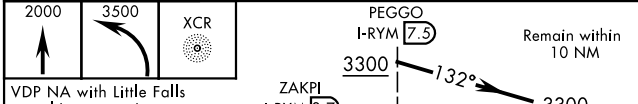


When local altimeter setting not received, use Little Falls altimeter setting.

Inoperative table does not apply to S-ILS or S-LOC CAT AB.

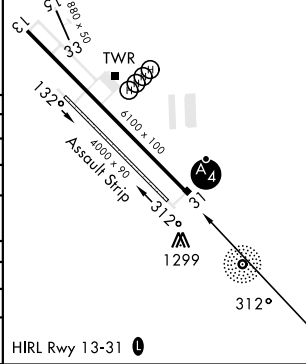
Procedure NA via V510 and V2 northwest bound without holding at AXN VOR/DME. ATC clearance required.

Rwy 31 helicopter visibility reduction below ¾ mile not authorized.



CATEGORY	A	B	C	D
	1396-1	250	(300-1)	
S-ILS 31				
S-LOC 31*	1580-1 434 (500-1)			
CIRCLING	1640-1	1660-1	1720-1½	2080-3
	490 (500-1)	510 (600-1)	570 (600-1½)	930 (1000-3)
LITTLE FALLS ALTIMETER SETTING MINIMUMS				
S-ILS 31	1420-1 274 (300-1)			
S-LOC 31**	1620-1	474 (500-1)	1620-1½	474 (500-1½)
CIRCLING	1680-1	1700-1	1760-1¾	2120-3
	530 (600-1)	550 (600-1)	610 (700-1¾)	970 (1000-3)

ELEV 1150	TDZE 1146
-----------	-----------



CAMP RIPLEY, MINNESOTA
Amdt 7 05OCT23

46°05'N-94°22'W

RAY S. MILLER AAF (KRYM)

ILS or LOC RWY 31

NC-1, 28 NOV 2024 to 26 DEC 2024

NC-1, 28 NOV 2024 to 26 DEC 2024