

# NDB RWY 31

RAY S. MILLER AAF (KRYM)

NDB XCR <b>404</b>	APCH CRS <b>301°</b>	Rwy Ldg THRE <b>6100</b> <b>1146</b>	Arprt Elev <b>1150</b>
-----------------------	-------------------------	--	---------------------------

[USA]

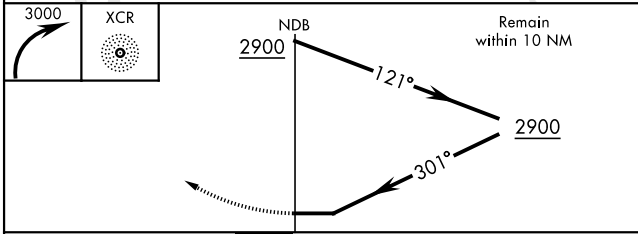
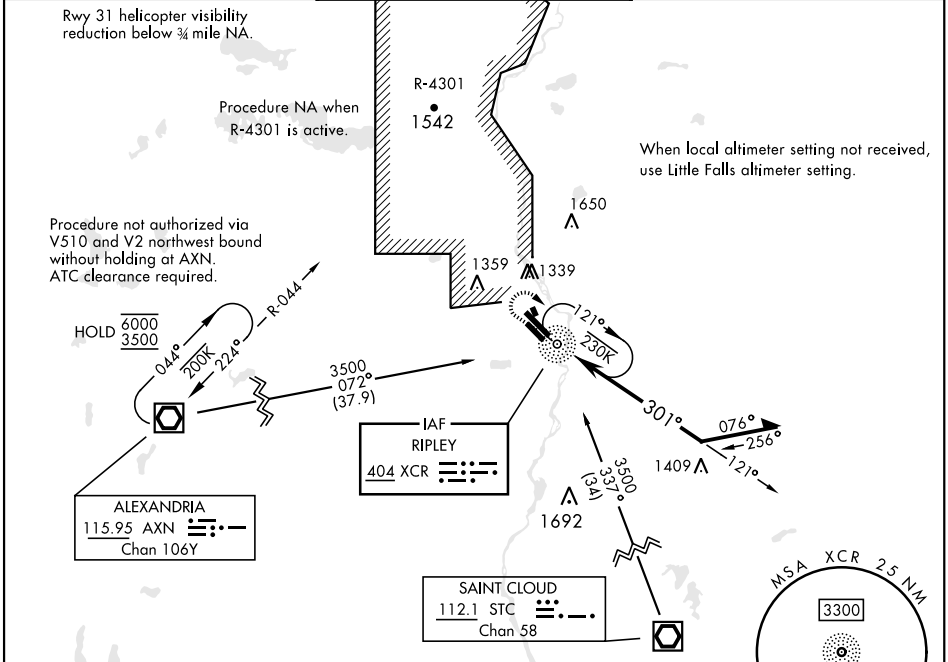
**∇** \*Inop table does not apply to CAT AB. When ALS inop, increase CAT CD vis to 2 miles.  
**\*\*** Inop table does not apply to CAT A. When ALS inop, increase CAT B vis to 1/4 miles, CAT CD vis to 2 miles.

**▲** NA

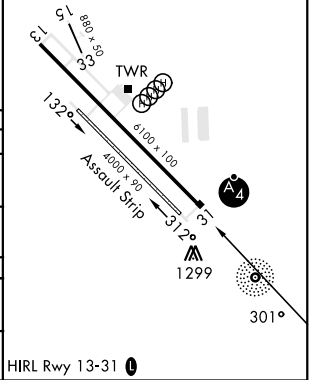
**MALSF**

**MISSED APPROACH:** Climbing right turn to 3000 in XCR NDB holding pattern.

<b>MINNEAPOLIS CENTER</b> <b>118.05 239.0</b>	<b>TOWER ★</b> <b>126.2 254.4</b>	<b>CLNC DEL</b> <b>126.2</b>
--	--------------------------------------	---------------------------------



ELEV	1150	THRE	1146
------	------	------	------



CATEGORY	A	B	C	D
S-31*	1860-1 714 (800-1)	1860-1 714 (800-1)	1860-1 714 (800-1)	1860-1 714 (800-1)
<b>C</b> CIRCLING	1860-1 710 (800-1)	1860-1 710 (800-1)	1860-2 710 (800-2)	2080-3 930 (1000-3)
LITTLE FALLS ALTIMETER SETTING MINIMUMS				
S-31**	1900-1 754 (800-1)	1900-1 754 (800-1)	1900-1 754 (800-1)	1900-1 754 (800-1)
<b>C</b> CIRCLING	1900-1 750 (800-1)	1900-1 750 (800-1)	1900-2 750 (800-2)	2120-3 970 (1000-3)

# NDB RWY 31

NC-1, 28 NOV 2024 to 26 DEC 2024

NC-1, 28 NOV 2024 to 26 DEC 2024