

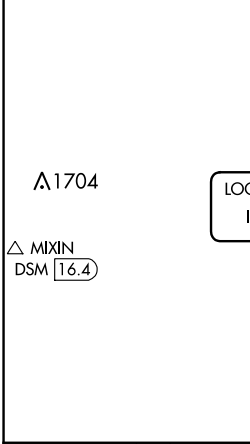
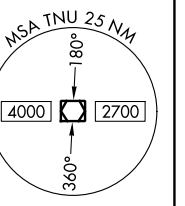
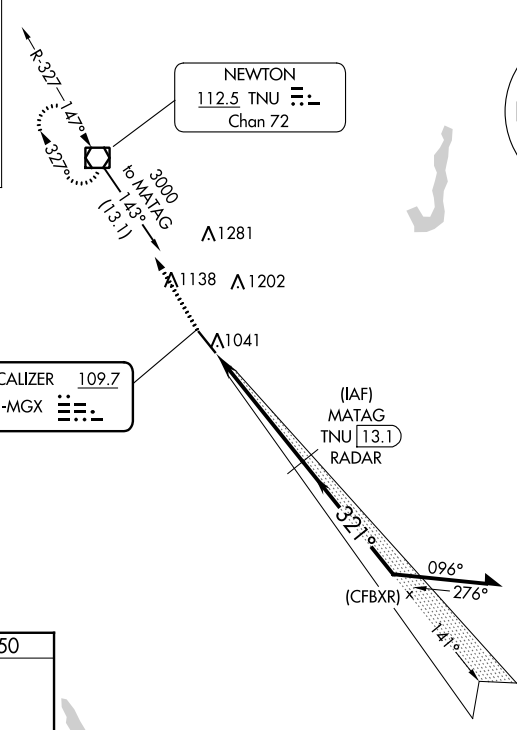
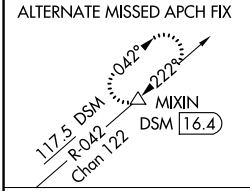
LOC I-MGX 109.7	APP CRS 321°	Rwy Idg TDZE Apt Elev	5600 950 953
---------------------------	------------------------	-----------------------------	---

ILS or LOC RWY 32

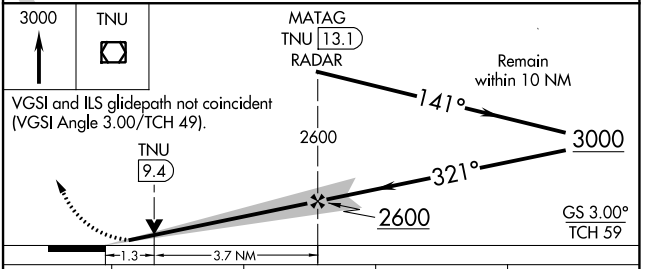
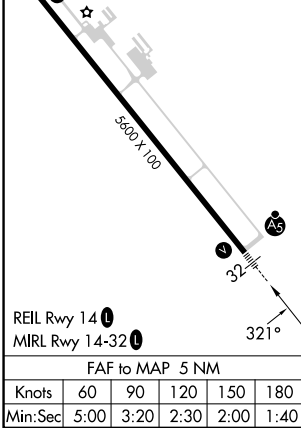
NEWTON MUNI-EARL JOHNSON FLD (TNU)

DME or RADAR required.		MALSR	MISSED APPROACH: Climb to 3000 direct TNU VOR/DME and hold, continue climb-in-hold to 3000.
For inop ALS, increase S-ILS 32 all Cats visibility to 7/8 SM. NA			

AWOS-3 132.275	DES MOINES APP CON 123.9 307.15	CLNC DEL 126.3	UNICOM 122.8 (CTAF)
--------------------------	---	--------------------------	-------------------------------



ELEV 953	TDZE 950
----------	----------



CATEGORY	A	B	C	D
S-ILS 32	1150-1/2 200 (200-1/2)			
S-LOC 32	1400-1/2 450 (500-1/2)		1400-7/8 450 (500-7/8)	
CIRCLING	1420-1 467 (500-1)	1440-1 487 (500-1)	1520-1 1/2 567 (600-1 1/2)	1600-2 647 (700-2)

NC-3, 28 NOV 2024 to 26 DEC 2024

NC-3, 28 NOV 2024 to 26 DEC 2024