

WAAS CH 99702 W32A	APP CRS 321°	Rwy Idg TDZE Apt Elev	5600 950 953
--	------------------------	-----------------------------	---

RNAV (GPS) RWY 32

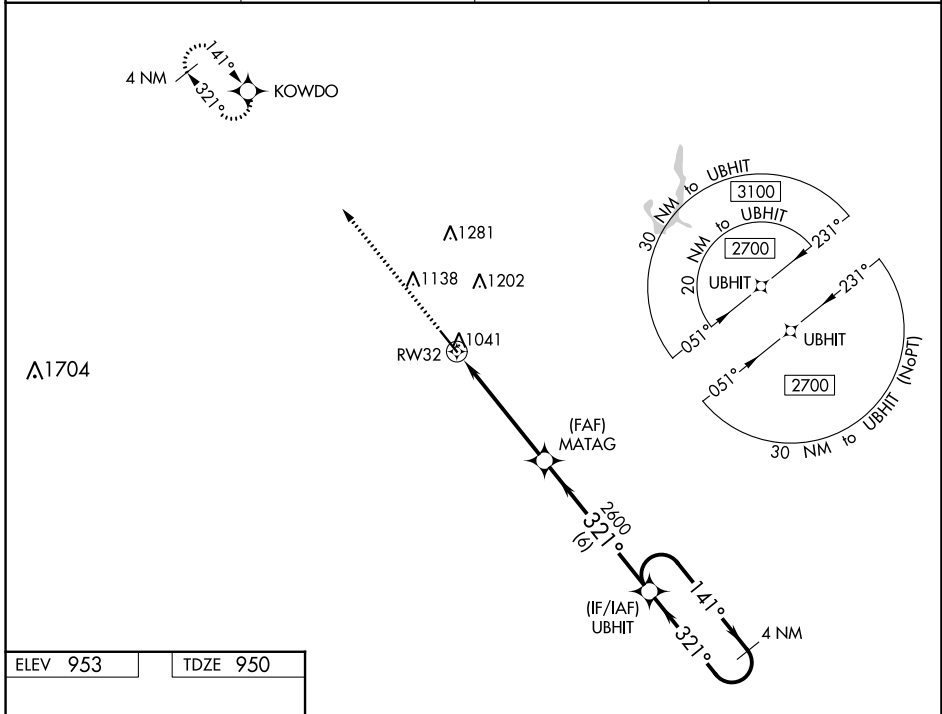
NEWTON MUNI-EARL JOHNSON FLD (TNU)

⚠ For uncompensated Baro-VNAV systems, LNAV/VNAV NA below -19°C (2°F) or above 54°C (130°F). DME/DME RNP-0.3 NA.
⚠ For inop MALSR, increase LNAV/VNAV all Cats visibility to ¾ SM.

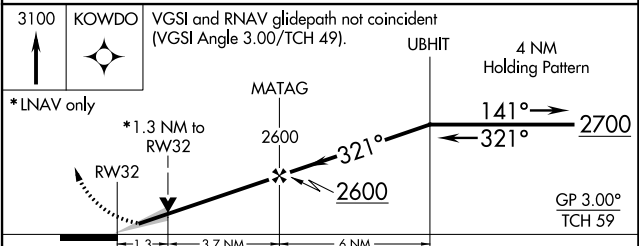
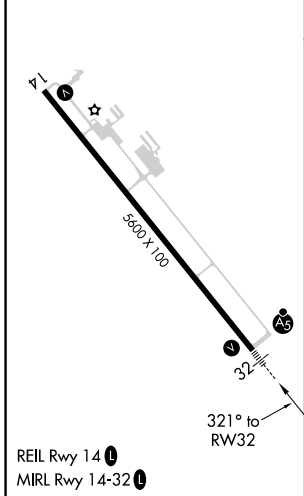


MISSED APPROACH: Climb to 3100 direct KOWDO and hold.

AWOS-3 132.275	DES MOINES APP CON 123.9 307.15	CLNC DEL 126.3	UNICOM 122.8 (CTAF) 0
--------------------------	---	--------------------------	---------------------------------



ELEV 953	TDZE 950
----------	----------



CATEGORY	A	B	C	D
LPV DA	1150-½		200 (200-½)	
LNAV/VNAV DA	1202-½		252 (300-½)	
LNAV MDA	1400-½		1400-7/8 450 (500-7/8)	
C CIRCLING	1420-1 467 (500-1)	1440-1 487 (500-1)	1520-1½ 567 (600-1½)	1600-2 647 (700-2)