

WAAS CH 87109 W06A	APP CRS 064°	Rwy Idg TDZE Apt Elev	6701 1231 1231
--	------------------------	-----------------------------	---

RNAV (GPS) RWY 6

STATE COLLEGE RGNL (UNV)

RNP APCH - GPS.

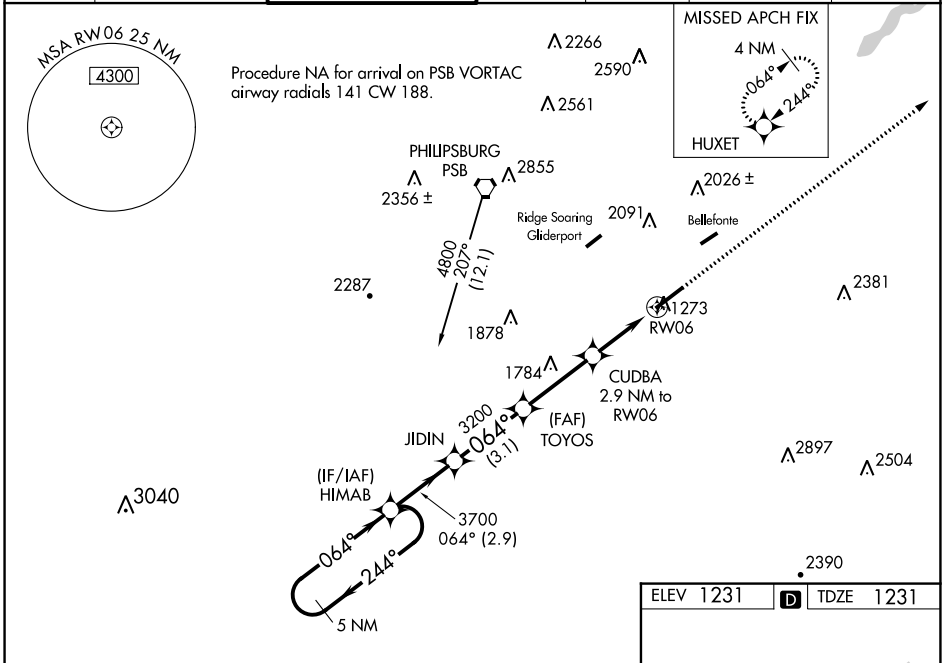
For uncompensated Baro-VNAV systems, LNAV/VNAV NA below -17°C or above 54°C.

⚠ Circling NA NW of Rwy 6-24. Baro-VNAV and VDP NA when using Clearfield altimeter setting.

⚠ When local altimeter setting not received, use Clearfield altimeter setting: increase LPV DA to 1537 feet, LNAV/VNAV DA to 1626 feet and all visibilities $\frac{1}{2}$ SM; increase all MDAs 120 feet and visibility LNAV Cats C/D $\frac{3}{8}$ SM and Circling Cat C $\frac{1}{2}$ SM.

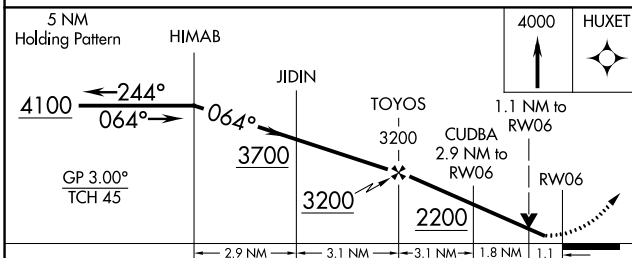
MISSED APPROACH: Climb to 4000 direct HUXET and hold.

D-ATIS 127.65	NEW YORK CENTER 134.8 338.3	UNIVERSITY PARK ★ 128.475 (CTAF) 0	GND CON 125.725	CLNC DEL 125.725	CLNC DEL 118.55 (When twr closed)	UNICOM 122.95
-------------------------	---------------------------------------	---	---------------------------	----------------------------	--	-------------------------

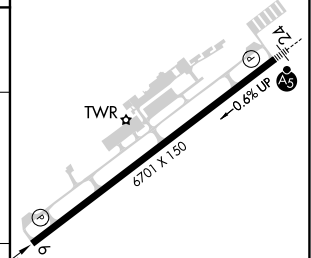


NE-4, 28 NOV 2024 to 26 DEC 2024

NE-4, 28 NOV 2024 to 26 DEC 2024



ELEV 1231	D TDZE 1231
-----------	--------------------



CATEGORY	A	B	C	D
LPV DA		1431- $\frac{3}{4}$	200 (200- $\frac{3}{4}$)	
LNAV/VNAV DA		1520-1	289 (300-1)	
LNAV MDA	1640-1	409 (500-1)	1640-1 $\frac{1}{8}$	409 (500-1 $\frac{1}{8}$)
C CIRCLING	1640-1 409 (500-1)	1700-1 469 (500-1)	1940-2 709 (800-2)	2580-3 1349 (1400-3)

REIL Rwy 6 **0**
HIRL Rwy 6-24 **0**