

APP CRS	Rwy Idg	6757
299°	TDZE	25
	Apt Elev	28

RNAV (GPS) RWY 30

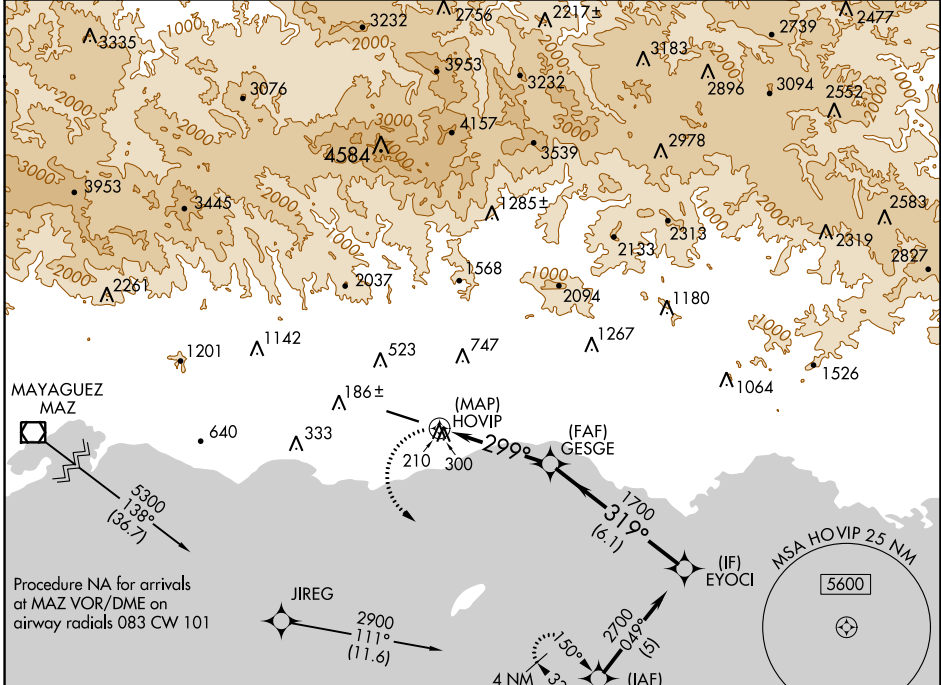
MERCEDITA (PSE) (TJPS)

RNP APCH:

▼ Rwy 12, 30 helicopter visibility reduction below 1 SM NA. Obtain local altimeter setting on CTAf; when not received, use Luis Munoz Marin Intl altimeter setting.
▲NA Circling NA for Cats C and D northeast of Rwy 12-30. Circling Rwy 12 NA at night.

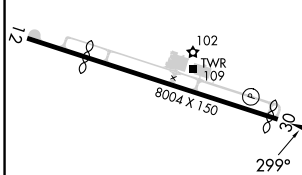
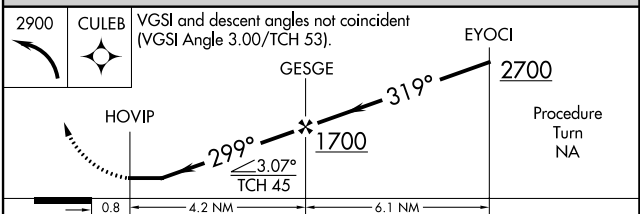
MISSED APPROACH: Climbing left turn to 2900 direct CULEB and hold.

AWOS-3PT 118.4	SAN JUAN CENTER 118.75 269.0	CLNC DEL 121.9	UNICOM 122.7 (CTAF)
--------------------------	--	--------------------------	-------------------------------



Procedure NA for arrivals at MAZ VOR/DME on airway radials 083 CW 101

ELEV	28	TDZE	25
------	-----------	------	-----------



CATEGORY	A	B	C	D
LNAV MDA	600-1 575 (600-1)	600-1½ 575 (600-1½)	600-1¾ 575 (600-1¾)	600-2 575 (600-2)
CIRCLING	840-1¼ 812 (900-1¼)	840-2½ 812 (900-2½)	840-3 1012 (1100-3)	1040-3 1012 (1100-3)
LUIS MUNOZ MARIN INTL ALTIMETER SETTING MINIMUMS				
LNAV MDA	1200-1¼ 1175 (1200-1¼)	1200-1½ 1175 (1200-1½)	1200-3 1175 (1200-3)	1175 (1200-3)
CIRCLING	1440-1¼ 1412 (1500-1¼)	1440-1½ 1412 (1500-1½)	1440-3 1412 (1500-3)	1640-3 1612 (1700-3)

HIRL Rwy 12-30 **1**
 REIL Rwy 12 and 30 **1**

SE-3, 28 NOV 2024 to 26 DEC 2024

SE-3, 28 NOV 2024 to 26 DEC 2024