

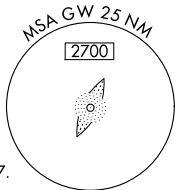
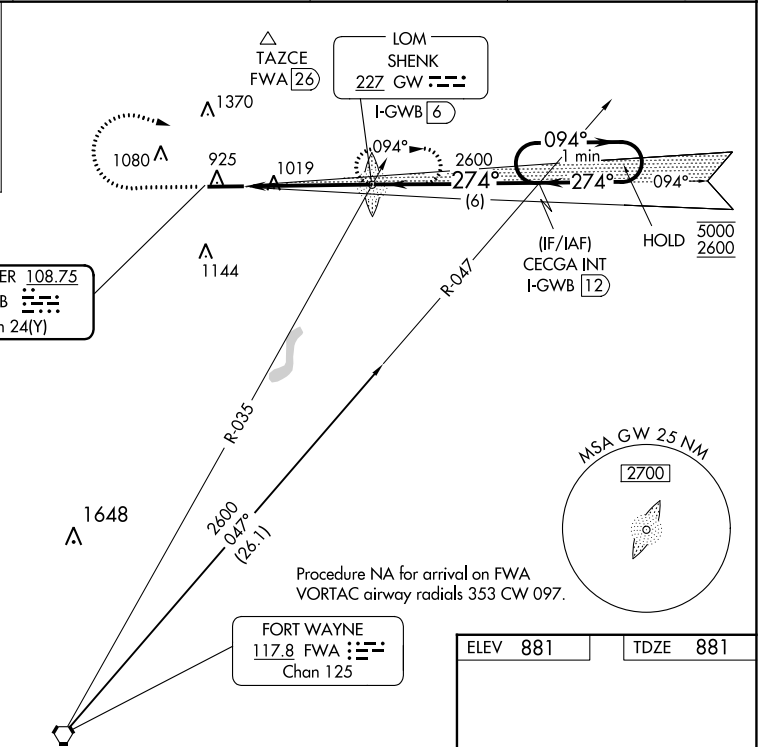
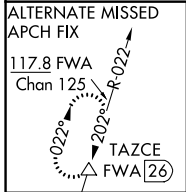
LOC/DME I-GWB 108.75 Chan 24(Y)	APP CRS 274°	Rwy Ldg TDZE 881 Apt Elev 881
--	------------------------	---

ILS or LOC RWY 27

DE KALB COUNTY (GWB)

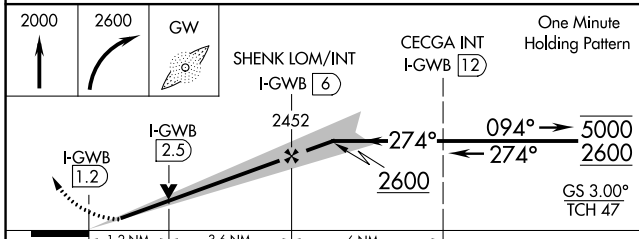
NA NA	MALSR 	MISSED APPROACH: Climb to 2000 then climbing right turn to 2600 direct SHENK LOM/INT/ I-GWB 6 DME and hold.
----------	-----------	---

AWOS-3P 124.15	FORT WAYNE APP CON 127.2 284.6	CLNC DEL 126.6	UNICOM 123.0 (CTAF) 0
--------------------------	--	--------------------------	---------------------------------



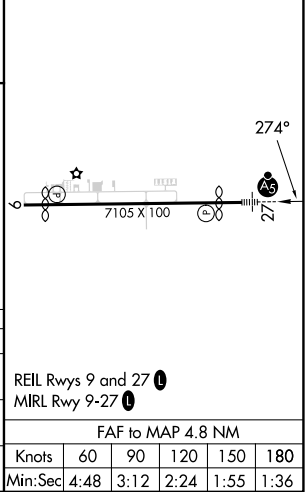
EC-2, 28 NOV 2024 to 26 DEC 2024

EC-2, 28 NOV 2024 to 26 DEC 2024



ELEV 881	TDZE 881
----------	----------

CATEGORY	A	B	C	D
S-ILS 27	1081-1/2		200 (200-1/2)	
S-LOC 27	1320-1/2 439 (500-1/2)		1320-3/4 439 (500-3/4)	
CIRCLING	1320-1 439 (500-1)	1560-1 679 (700-1)	1720-2 1/2 839 (900-2 1/2)	1720-2 3/4 839 (900-2 3/4)



REIL Rwys 9 and 27 0					
MIRL Rwy 9-27 0					
FAF to MAP 4.8 NM					
Knots	60	90	120	150	180
Min:Sec	4:48	3:12	2:24	1:55	1:36