

| | | |
|---|------------------------|---|
| LOC I-DRT 111.9 Chan 56 | APP CRS 132° | Rwy Idg 6000 TDZE 1002 Apt Elev 1002 |
|---|------------------------|---|

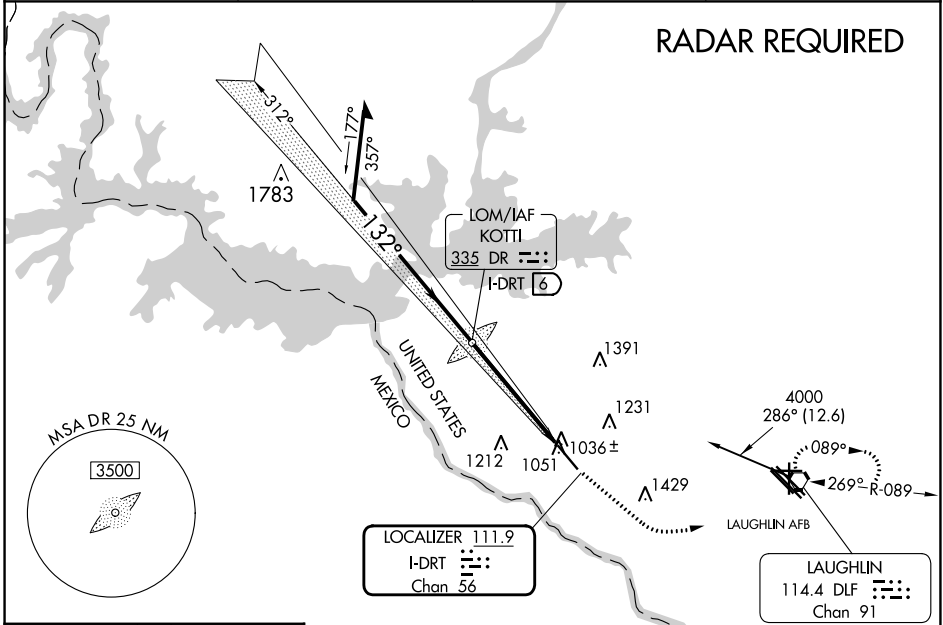
ILS or LOC RWY 13

DEL RIO INTL (DRT)

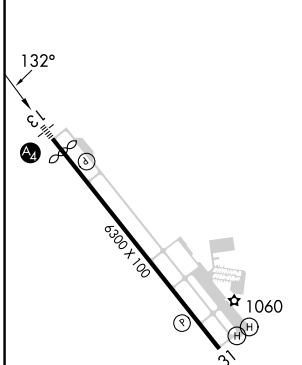
NA Circling NA for Cat D SW of Rwy 13-31. When local altimeter setting not received, use Laughlin AFB altimeter setting and increase all DAs 30 feet, all MDAs 40 feet, increase S-LOC 13 Cat D and Circling Cats C and D visibility ¼ SM. VDP NA when using Laughlin AFB altimeter setting.

MALS
MISSED APPROACH: Climb to 2000 via heading 122° then climbing left turn to 4000 direct DLF VORTAC and hold. Continue climb-in-hold to 4000.

| | | | |
|------------------------|---|--------------------------|-------------------------------|
| ASOS 118.525 | DEL RIO APP CON ★ 119.6 259.1 | CLNC DEL 120.5 | UNICOM 122.8 (CTAF) |
|------------------------|---|--------------------------|-------------------------------|



| | | |
|-----------|---|-----------|
| ELEV 1002 | D | TDZE 1002 |
|-----------|---|-----------|



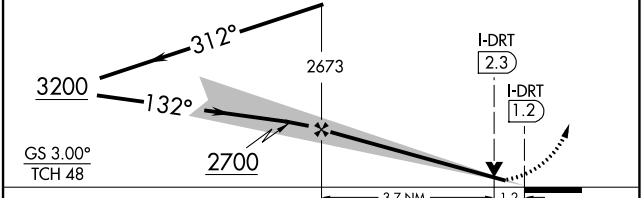
Remain within 10 NM

DR KOTTI LOM I-DRT 6

2000 hdg 122°

4000

DLF



| CATEGORY | A | B | C | D |
|----------|-----------------------|-----------------------|-----------------------|-------------------------|
| S-ILS 13 | 1202-¾ 200 (200-¾) | | | |
| S-LOC 13 | 1420-½ | 418 (500-½) | 1420-¾ | 418 (500-¾) |
| CIRCLING | 1440-1 438 (500-1) | 1560-1 558 (600-1) | 1740-2 738 (800-2) | 1740-2¼ 738 (800-2¼) |

| | | | | | |
|---------|------|------|------|------|------|
| Knots | 60 | 90 | 120 | 150 | 180 |
| Min:Sec | 4:54 | 3:16 | 2:27 | 1:58 | 1:38 |

SC-3, 28 NOV 2024 to 26 DEC 2024

SC-3, 28 NOV 2024 to 26 DEC 2024