

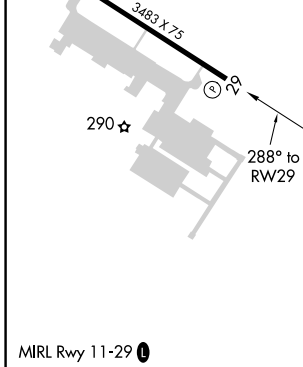
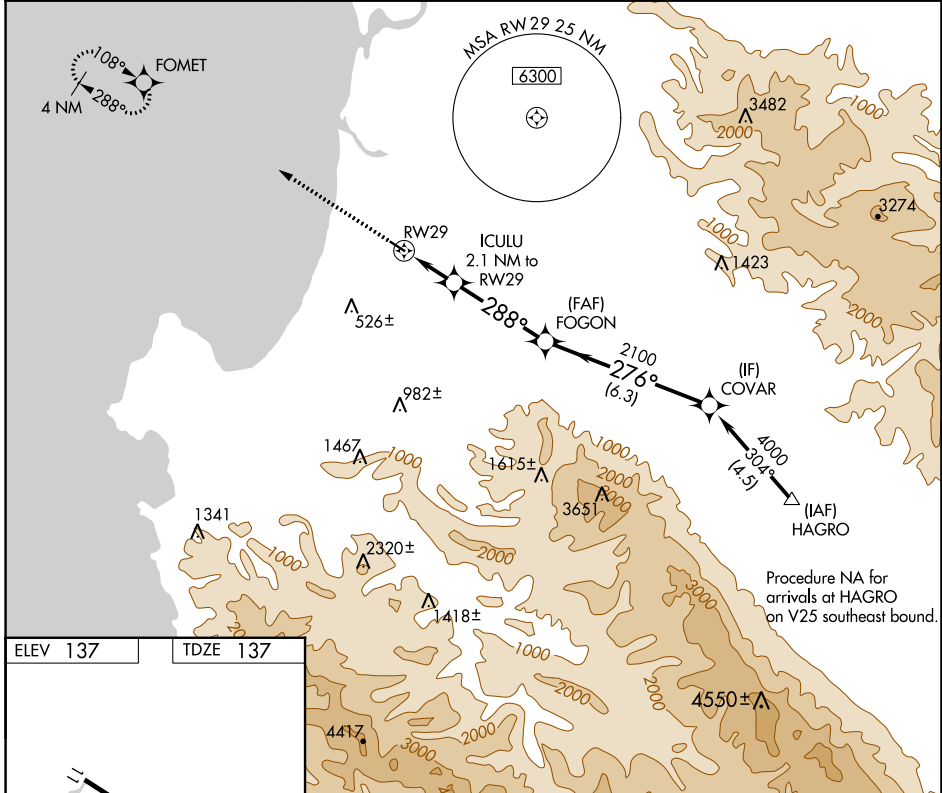
APP CRS	Rwy Idg	<b>3483</b>
<b>288°</b>	TDZE	<b>137</b>
	Apt Elev	<b>137</b>

# RNAV (GPS) RWY 29

MARINA MUNI (OAR)

RNP APCH.	MISSED APPROACH: Climb to 2700 direct FOMET and hold, continue climb-in-hold to 2700.
-----------	---

AWOS-3PT <b>134.025</b>	NORCAL APP CON <b>133.0 251.15</b>	UNICOM <b>122.7 (CTAF) 0</b>
----------------------------	---------------------------------------	---------------------------------



2700	FOMET			
	ICULU 2.1 NM to RWY29	FOGON	COVAR	
	1.3 NM to RWY29	2100	4000	
	0.8	3.9 NM	6.3 NM	
880	288°	276°		
	≤ 3.00° TCH 45			
CATEGORY	A	B	C	D
LNAV MDA	600-1	463 (500-1)		NA
CIRCLING	640-1 503 (600-1)	760-1 623 (700-1)		NA

SW-2, 28 NOV 2024 to 26 DEC 2024

SW-2, 28 NOV 2024 to 26 DEC 2024

Procedure NA for arrivals at HAGRO on V25 southeast bound.