

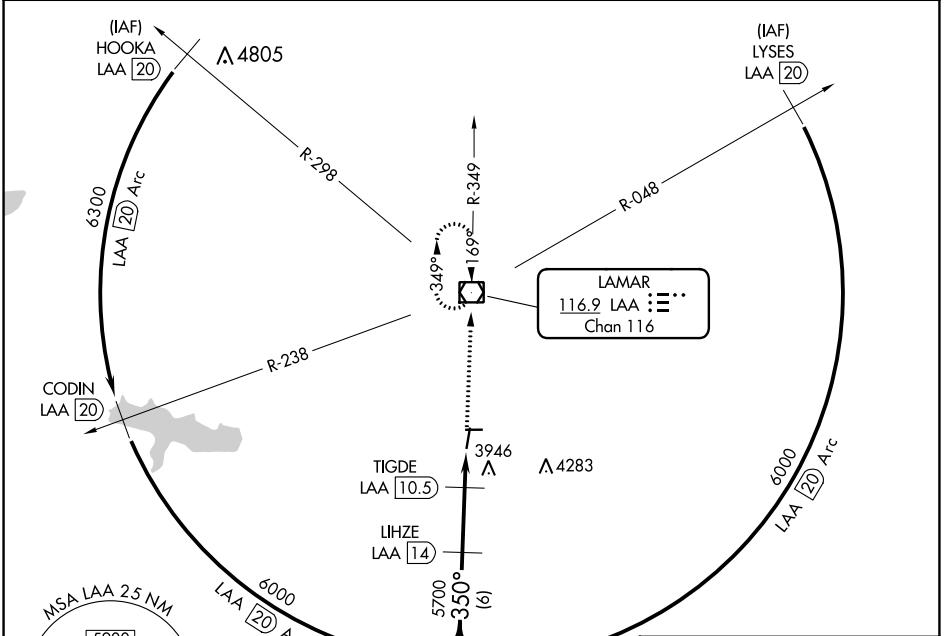
VOR/DME LAA 116.9 Chan 116	APP CRS 350°	Rwy Idg TDZE Apt Elev	6304 3706 3706
--	------------------------	-----------------------------	---

VOR RWY 36

SOUTHEAST COLORADO RGNL (L.A.A)

DME required.	MISSED APPROACH: Climb to 6000 direct LAA VOR/DME and hold.
Rwy 36 helicopter visibility reduction below 3/4 SM NA.	

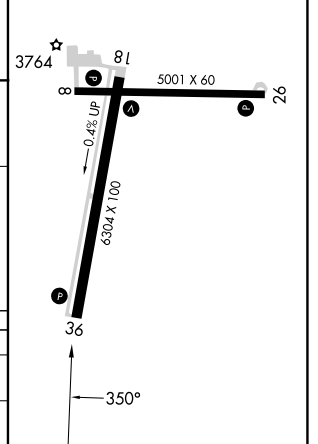
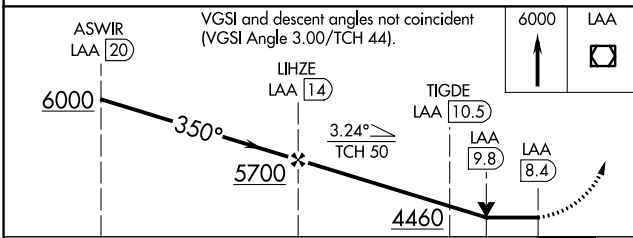
ASOS 135.625	DENVER CENTER 133.4 377.175	UNICOM 122.8 (CTAF) 0
------------------------	---------------------------------------	---------------------------------



SW-1, 28 NOV 2024 to 26 DEC 2024

SW-1, 28 NOV 2024 to 26 DEC 2024

ELEV 3706	TDZE 3706
REIL Rwy 8, 26, 18, and 36	
MIRL Rwy 8-26 and 18-36	



CATEGORY	A	B	C	D
S-36	4200-1 494 (500-1)		4200-1 3/8 494 (500-1 3/8)	4200-1 1/2 494 (500-1 1/2)
CIRCLING	4420-1 714 (800-1)		4420-2 714 (800-2)	4420-2 1/4 714 (800-2 1/4)