

APP CRS 218°	Rwy Idg 4000
	TDZE 2565
	Apt Elev 2583

RNAV (GPS) RWY 22

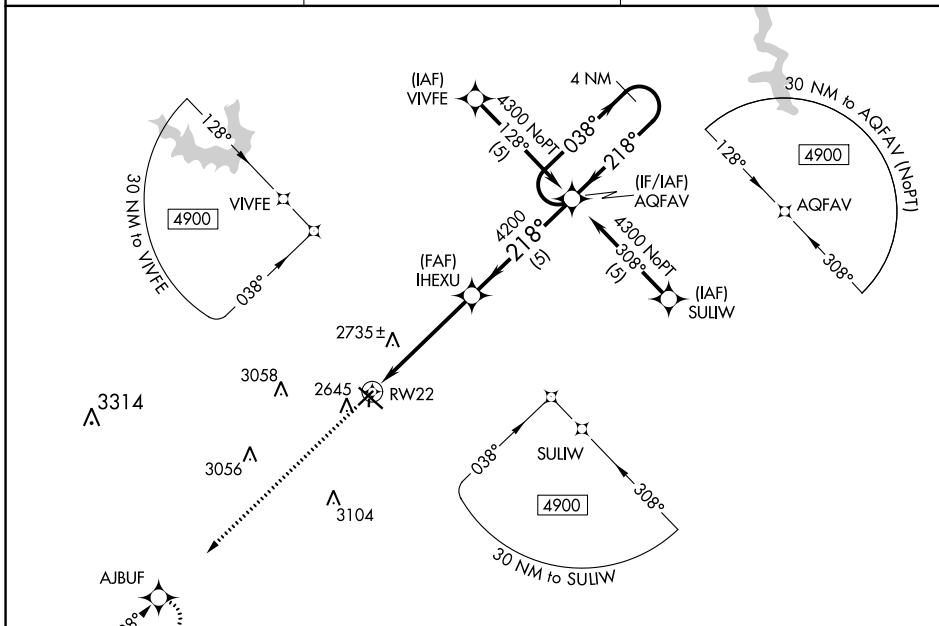
MC COOK BEN NELSON RGNL (MCK)

RNP APCH-GPS.

▼ When local altimeter setting not received, use Imperial Muni altimeter setting and increase all MDA 220 feet, increase S-22 and Circling Cat C visibility ¾ mile. VDP NA when using Imperial Muni altimeter setting. Circling NA to Rws 17 and 35.

MISSED APPROACH: Climb to 5000 via 218° course to AJBUF and hold.

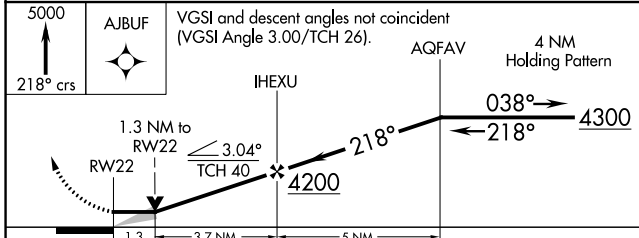
ASOS 119.025	DENVER CENTER 132.7 226.675	UNICOM 122.8 (CTAF)
------------------------	---------------------------------------	-------------------------------



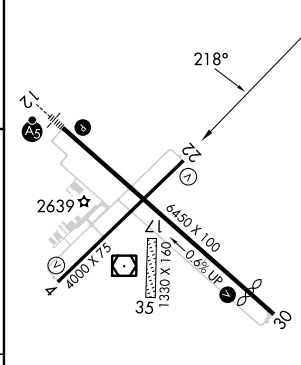
NC-2, 28 NOV 2024 to 26 DEC 2024

NC-2, 28 NOV 2024 to 26 DEC 2024

ELEV 5000	AJBUF	VGSIs and descent angles not coincident (VGSi Angle 3.00/TCH 26).
218° crs		



ELEV 2583	TDZE 2565
-----------	-----------



CATEGORY	A	B	C	D
RNAV MDA	3000-1	435 (500-1)	3000-1¼ 435 (500-1¼)	NA
CIRCLING	3040-1 457 (500-1)	3120-1 537 (600-1)	3360-2¼ 777 (800-2¼)	NA

REIL Rwy 30
MIRL Rws 4-22 and 12-30