


LOC I-CPS <b>109.1</b>	APP CRS <b>302°</b>	Rwy Idg <b>7002</b>
		TDZE <b>411</b>
		Apt Elev <b>413</b>

# ILS or LOC RWY 30L

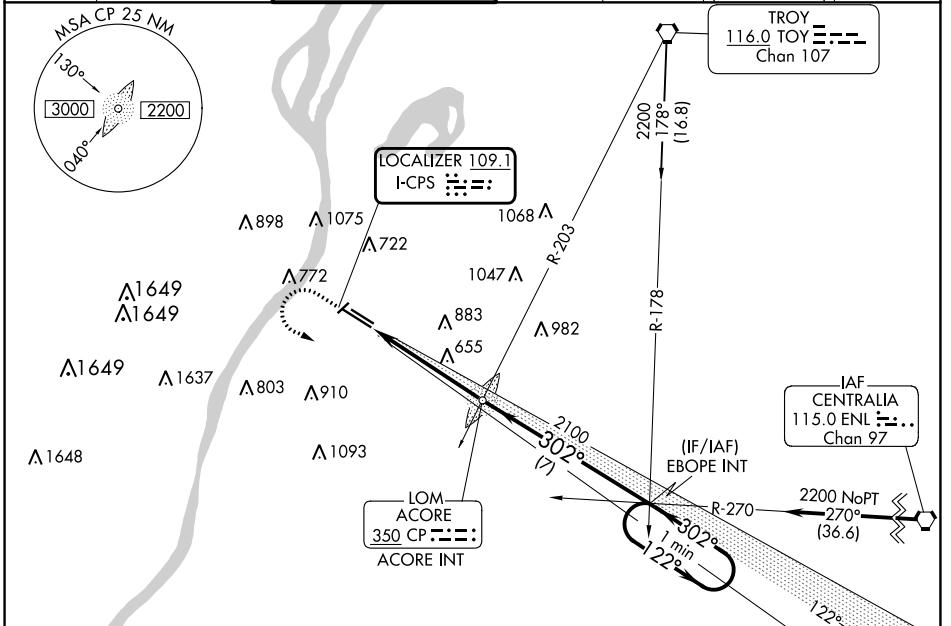
ST LOUIS DOWNTOWN (CPS)

**⚠** When local altimeter setting not received, use St Louis Lambert Intl altimeter setting: increase DA to 674 feet, increase all MDAs 80 feet and visibility S-LOC 30L Cats C/D and Circling Cat C ¼ SM. For inop ALS when using St Louis Lambert Intl altimeter setting, increase S-ILS 30L visibility ¼ SM. Circling Rwy 5 NA at night.

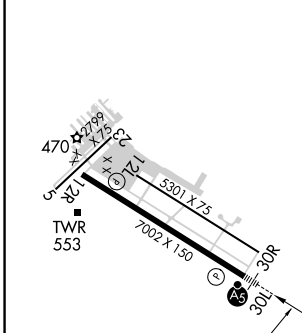
**MALSR** 

**MISSED APPROACH:** Climb to 1400 then climbing left turn to 2200 on heading 080° and on I-CPS SE course (122°) to EBOPE INT and hold.

ATIS <b>121.45</b>	ST LOUIS APP CON <b>123.7 371.875</b>	DOWNTOWN TOWER * <b>119.925 (CTAF) 0 379.3</b>	GND CON <b>121.8</b>	CLNC DEL <b>118.275</b>	CLNC DEL <b>121.8</b> (When twr closed)	UNICOM <b>122.95</b>
-----------------------	--	---	-------------------------	----------------------------	---	-------------------------

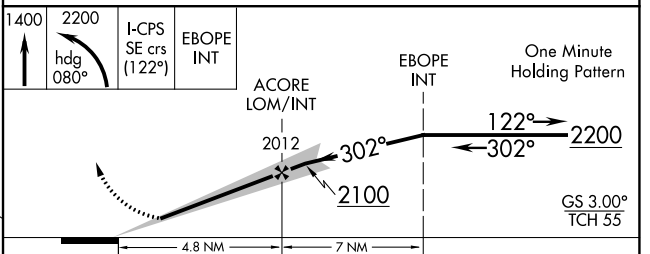


ELEV 413	<b>D</b>	TDZE 411
----------	----------	----------



HIRL Rwy 12R-30L  
REIL Rwys 12L and 12R  
REIL Rwy 30R  
MIRL Rwys 5-23 and 12L-30R  
FAF to MAP 4.8 NM

Knots	60	90	120	150	180
Min:Sec	4:48	3:12	2:24	1:55	1:36



CATEGORY	A	B	C	D
S-ILS 30L		611-½	200 (200-½)	
S-LOC 30L	960-½	549 (600-½)	960-1⅛ 549 (600-1⅛)	960-1¼ 549 (600-1¼)
CIRCLING	940-1 527 (600-1)	1120-1 707 (800-1)	1240-2½ 827 (900-1½)	1380-3 967 (1000-3)

EC-3, 28 NOV 2024 to 26 DEC 2024

EC-3, 28 NOV 2024 to 26 DEC 2024