

WAAS CH <b>48910</b> <b>W05A</b>	APP CRS <b>051°</b>	Rwy Idg <b>572Z</b> TDZE <b>470</b> Apt Elev <b>480</b>
--	------------------------	---

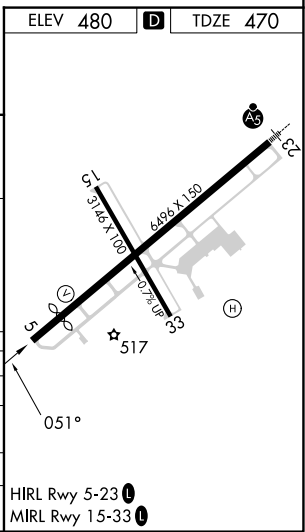
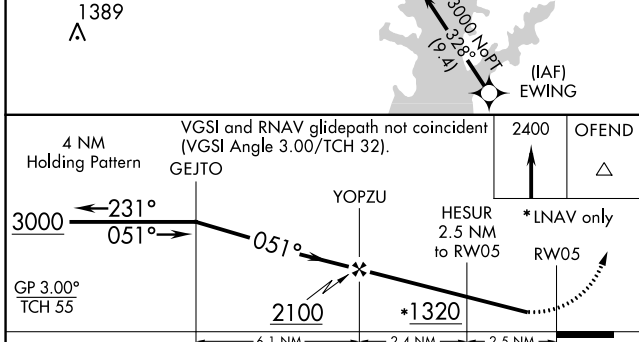
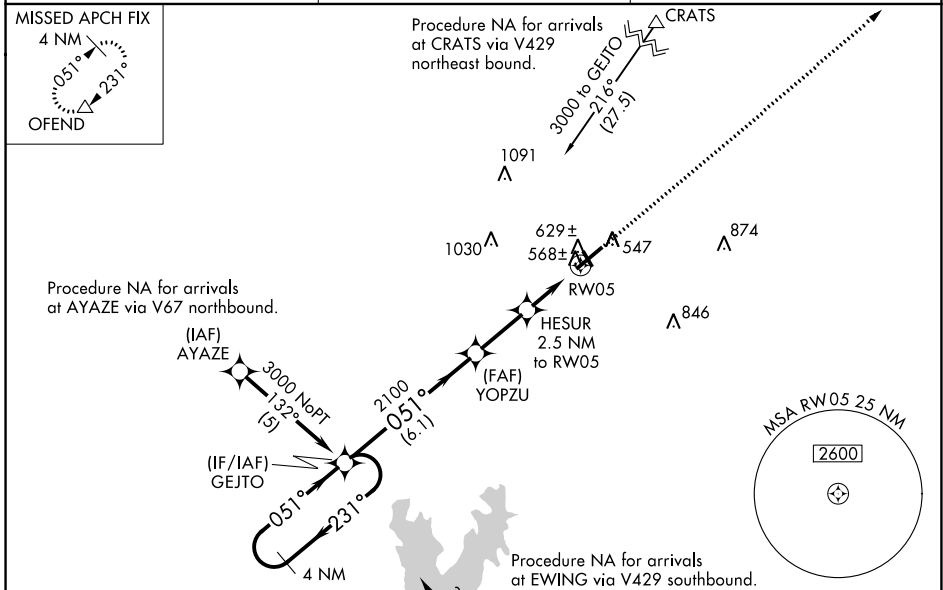
# RNAV (GPS) RWY 5

MOUNT VERNON (MVN)

**⚠** For uncompensated Baro-VNAV systems, LNAV/VNAV NA below -15° C (5°F) or above 48° C (118° F). DME/DME RNP-0.3 NA. Visibility reduction by helicopters NA. When local altimeter setting not received, use Centralia altimeter setting: increase LPV DA to 847 feet; increase LNAV/VNAV DA to 883 feet and all visibilities ¼ SM; increase all MDAs 60 feet and LNAV visibility Cat D and Circling Cat C ¼ SM. Baro-VNAV NA when using Centralia altimeter setting. Circling to Rwy 15/33 NA at night.

**MISSED APPROACH:**  
Climb to 2400 direct OFEND and hold.

AWOS-3PT <b>118.2</b>	KANSAS CITY CENTER <b>127.7 351.825</b>	UNICOM <b>123.0 (CTAF) 0</b>
--------------------------	--	---------------------------------



CATEGORY	A	B	C	D
LPV DA		802-1¼	332 (400-1¼)	
LNAV/VNAV DA		838-1¼	368 (400-1¼)	
LNAV MDA	880-1	410 (400-1)	880-1¼	410 (400-1¼)
CIRCLING	1000-1	520 (600-1)	1140-1¾ 660 (700-1¾)	1380-3 900 (900-3)

EC-3, 28 NOV 2024 to 26 DEC 2024

EC-3, 28 NOV 2024 to 26 DEC 2024