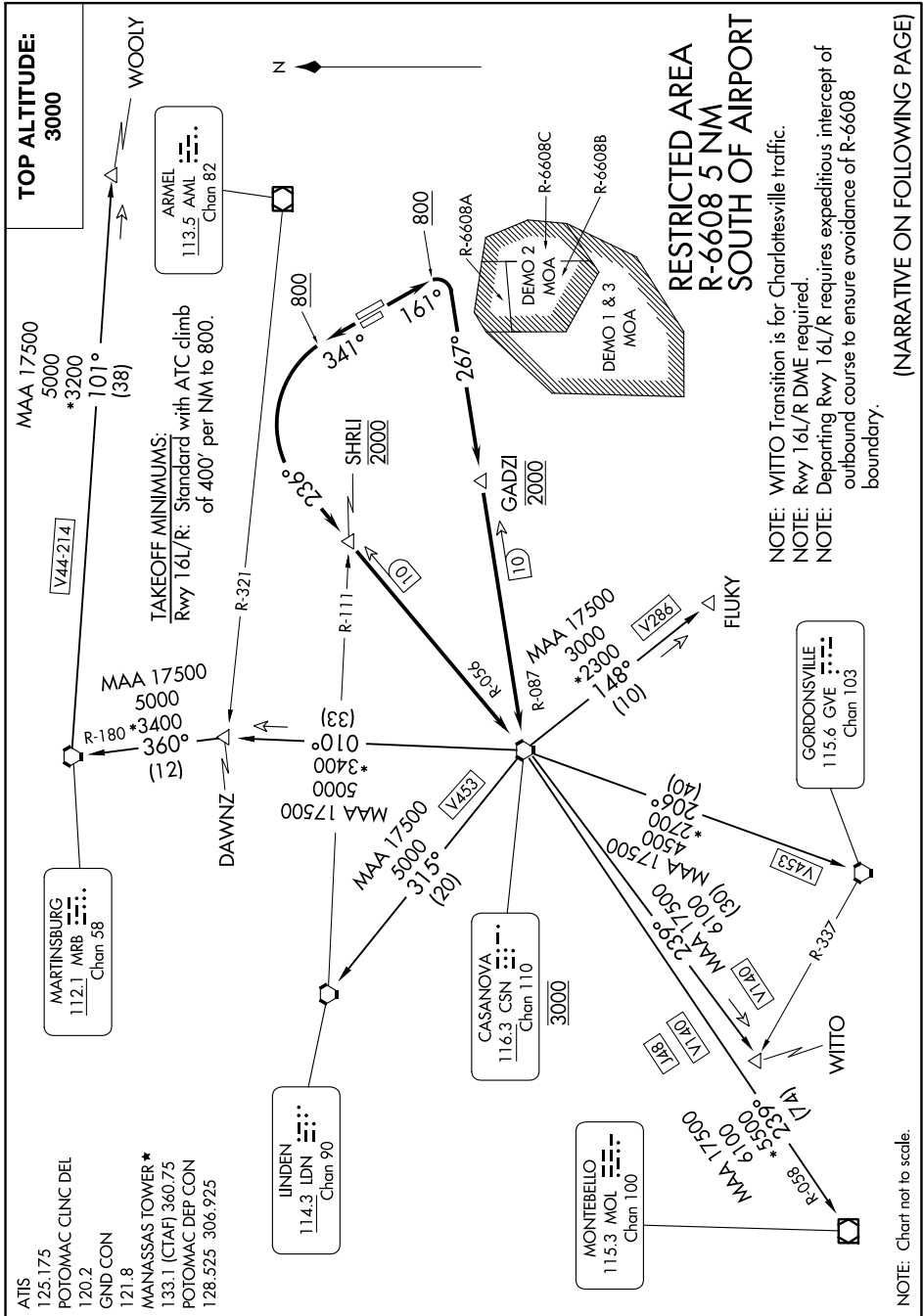


NE-3, 28 NOV 2024 to 26 DEC 2024



(NARRATIVE ON FOLLOWING PAGE)

NOTE: WITTO Transition is for Charlottesville traffic.
 NOTE: Rwy 16L/R DME required.
 NOTE: Departing Rwy 16L/R requires expeditious intercept of outbound course to ensure avoidance of R-6608 boundary.

NOTE: Chart not to scale.

NE-3, 28 NOV 2024 to 26 DEC 2024