

# HIICH TWO DEPARTURE (RNAV)

AL-5326

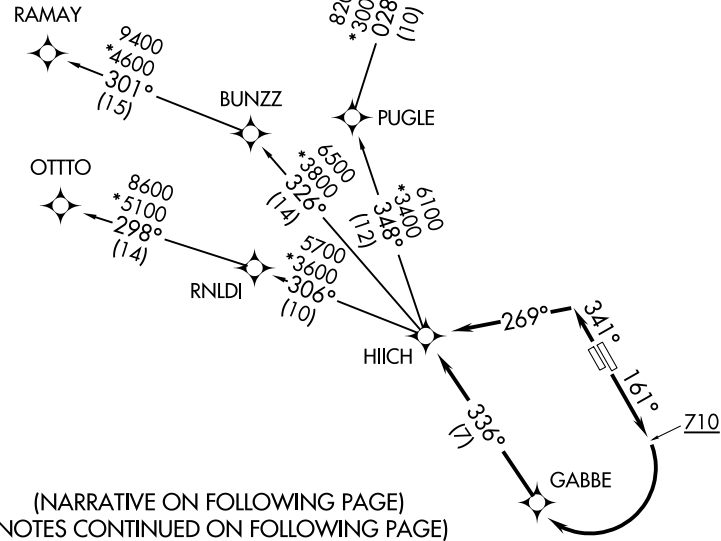
ATIS  
125.175  
CLNC DEL  
120.2  
GND CON  
121.8  
MANASSAS TOWER ★  
133.1 (CTAF) 360.75  
POTOMAC DEP CON  
128.525 306.925

**TOP ALTITUDE:  
3000**

NOTE: DME/DME/IRU or GPS required.  
NOTE: RNAV 1.  
NOTE: RADAR required.  
NOTE: Turbojets only.

### TAKEOFF MINIMUMS:

Rwys 16L/R: Standard with minimum  
climb of 500' per NM to 710.  
Rwys 34L/R: Standard with minimum  
climb of 500' per NM to 710, then  
minimum climb of 335' per NM to 3800.



NE-3, 28 NOV 2024 to 26 DEC 2024

NE-3, 28 NOV 2024 to 26 DEC 2024

(NARRATIVE ON FOLLOWING PAGE)  
(NOTES CONTINUED ON FOLLOWING PAGE)

NOTE: Chart not to scale.

# HIICH TWO DEPARTURE (RNAV)