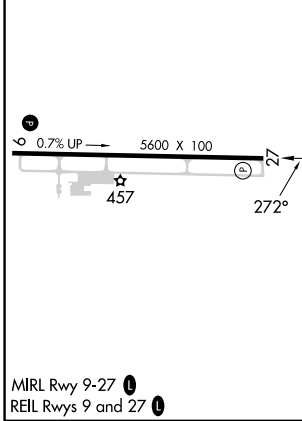
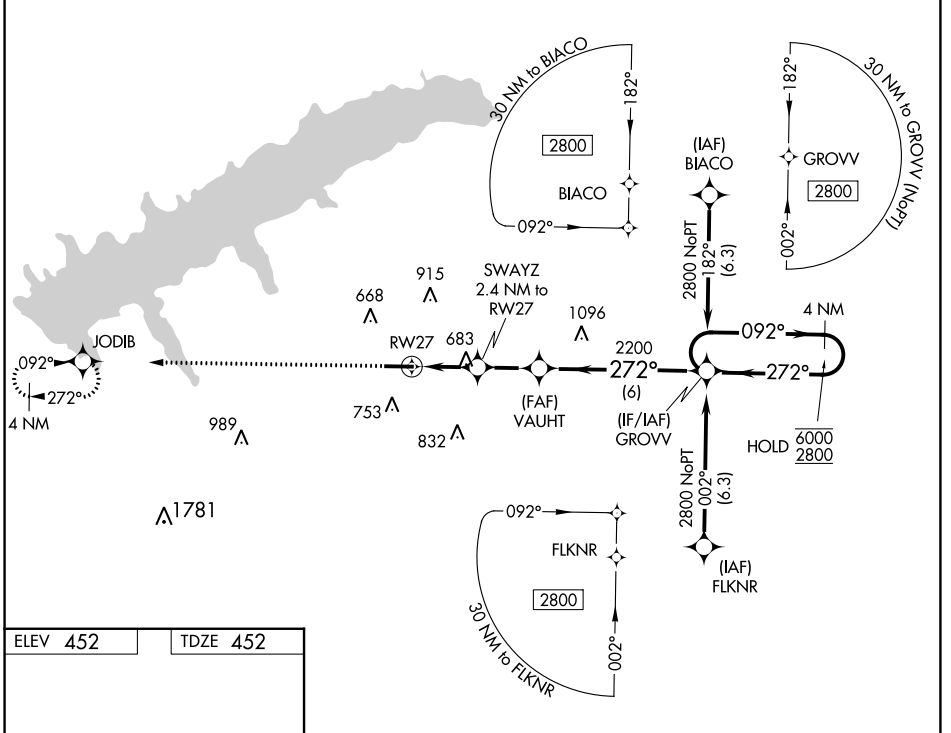


WAAS CH 63235 W27A	APP CRS 272°	Rwy Idg TDZE Apt Elev	5600 452 452
--	------------------------	-----------------------------	---

RNAV (GPS) RWY 27

UNIVERSITY-OXFORD (UOX)

RNP APCH - GPS.		MISSED APPROACH: Climb to 2800 direct JODIB and hold.	
Rwy 27 helicopter visibility reduction below 3/4 SM NA.			
AWOS-3PT 132.725	MEMPHIS CENTER 128.5 279.55	GCO 135.075	UNICOM 123.0 (CTAF) 0



	2800	JODIB							
			SWAYZ 2.4 NM to RWY 27	VAUHT		GROV			4 NM Holding Pattern
			1.1 NM to RWY 27	2200		092° → 6000			← 272° 2800
			1.1	1.3 NM	2.2 NM	6 NM			
CATEGORY			A	B	C	D			
LP MDA			940-1	488 (500-1)	940-1 ³ / ₈	488 (500-1 ³ / ₈)			
LNAV MDA			940-1	488 (500-1)	940-1 ³ / ₈	488 (500-1 ³ / ₈)			
CIRCLING			980-1 528 (600-1)	1060-1 608 (700-1)	1380-2 ¹ / ₂ 928 (1000-2 ¹ / ₂)	1380-2 ³ / ₄ 928 (1000-2 ³ / ₄)			

OXFORD, MISSISSIPPI
MIRL Rwy 9-27
REIL Rwy 9 and 27

34°23'N-89°32'W

UNIVERSITY-OXFORD (UOX)

RNAV (GPS) RWY 27

SC-4, 28 NOV 2024 to 26 DEC 2024

SC-4, 28 NOV 2024 to 26 DEC 2024