

VOR/DME MAZ <b>110.6</b> Chan <b>43</b>	APP CRS <b>081°</b>	Rwy Idg <b>4699</b> TDZE <b>28</b> Apt Elev <b>28</b>
---	------------------------	---

# VOR RWY 9

EUGENIO MARIA DE HOSTOS (MAZ)(TJMZ)

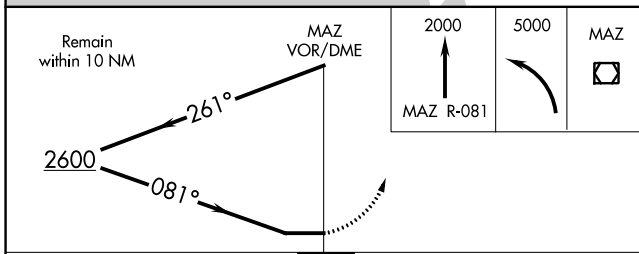
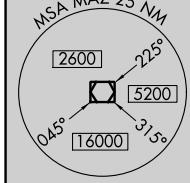
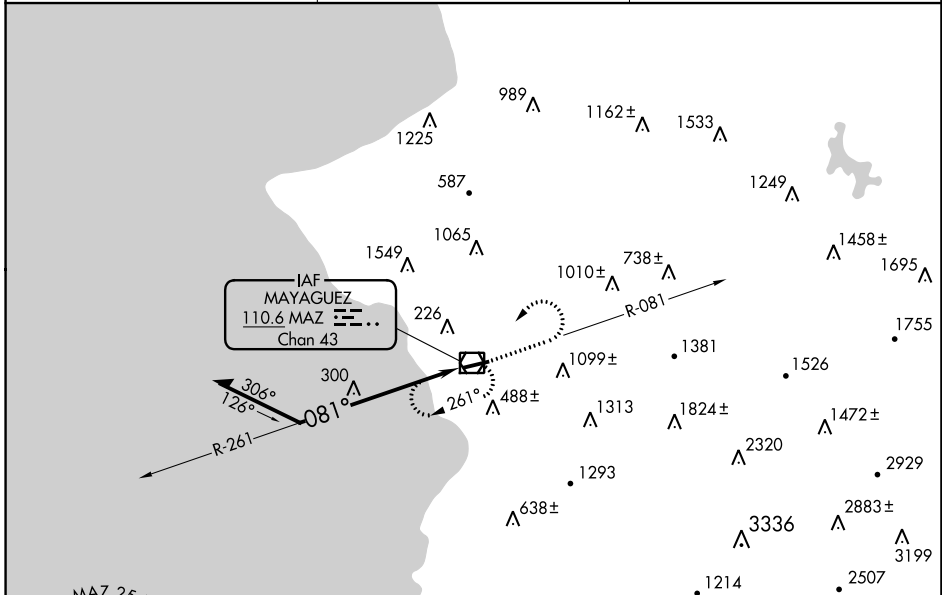
**⚠** Circling to Rwy 27 NA at night. When VGSI inoperative, procedure NA at night. Visibility reduction by helicopters NA. When Class E surface area not in effect, except for operators with approved weather reporting service, procedure NA.

**⚠** MISSED APPROACH: Climb to 2000 on MAZ VOR/DME R-081 then climbing left turn to 5000 direct MAZ VOR/DME and hold, continue climb-in-hold to 5000.

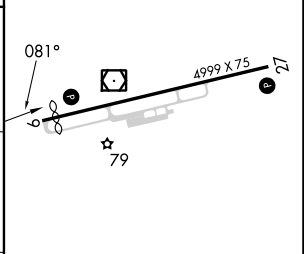
SAN JUAN CENTER  
**118.75 269.0**

CLNC DEL  
**121.7**

UNICOM  
**122.8 (CTAF) 0**



ELEV 28	TDZE 28
---------	---------



CATEGORY	A	B	C	D
S-9	1100-1¼ 1072 (1100-1¼)	1100-1½ 1072 (1100-1½)	1100-3 1072 (1100-3)	NA
CIRCLING	1100-1¼ 1072 (1100-1¼)	1100-1½ 1072 (1100-1½)	1460-3 1432 (1500-3)	NA

REIL Rwy 9 0  
MIRL Rwy 9-27

SE-3, 28 NOV 2024 to 26 DEC 2024

SE-3, 28 NOV 2024 to 26 DEC 2024