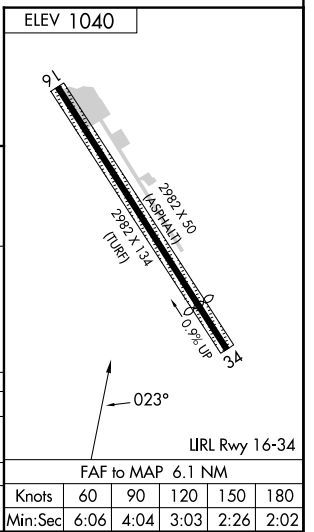
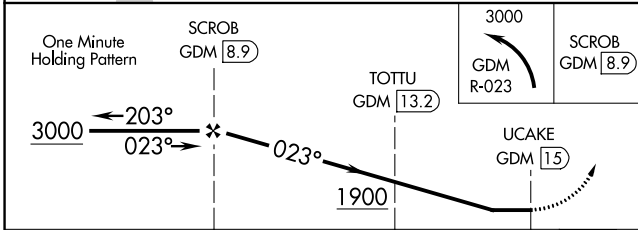
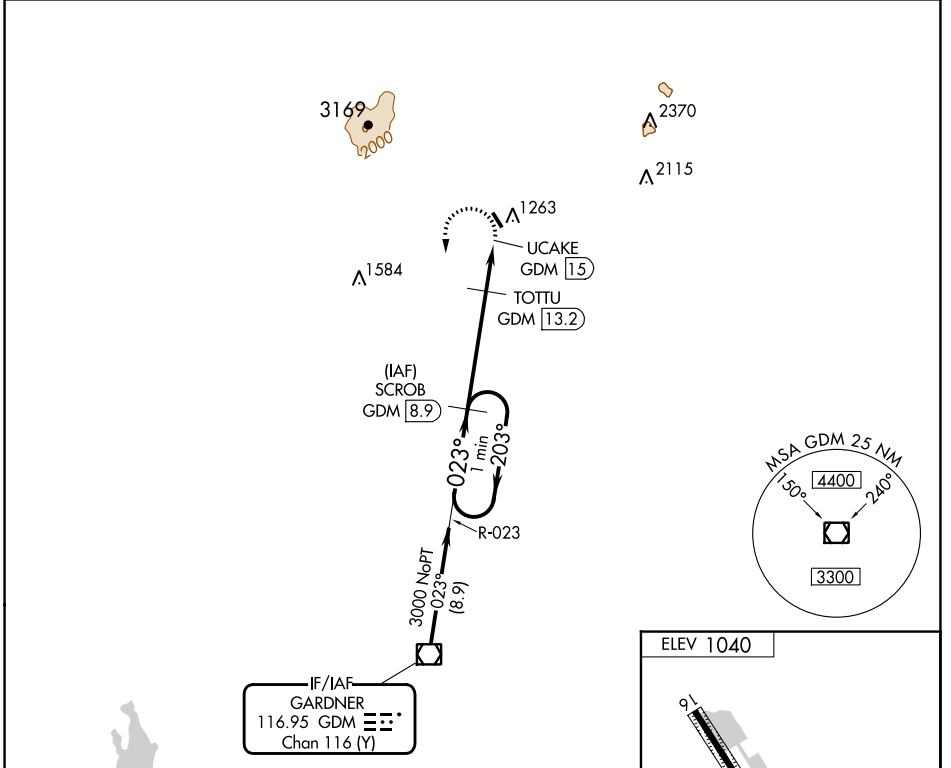


VOR/DME GDM <b>116.95</b> Chan <b>116</b> (Y)	APP CRS <b>023°</b>	Rwy Idg TDZE Apt Elev <b>1040</b>	<b>N/A</b> <b>N/A</b> <b>1040</b>
---	------------------------	--------------------------------------	---

# VOR-A

JAFFREY AIRFIELD SILVER RANCH (A/FN)

DME required. When local altimeter setting not received, use KEENE altimeter setting and increase all MDA 120 feet; increase Cat B and TOTU fix minimums all Cats visibility 1/4 mile. Procedure NA at night. Rwy 16 and 34 helicopter visibility reduction below 1 SM NA. Rwy 16 and 34 helicopter visibility reduction below 1 SM NA.		MISSED APPROACH: Climbing left turn to 3000 on GDM VOR/DME R-023 to SCROB/GDM 8.9 DME and hold.
ASOS <b>135.875</b>	BOSTON CENTER <b>123.75 338.2</b>	UNICOM <b>122.8</b> (CTAF)



CATEGORY	A	B	C	D
CIRCLING	1900-1 1/4	860 (900-1 1/4)	NA	
TOTU FIX MINIMUMS				
CIRCLING	1780-1 740 (800-1)	1820-1 780 (800-1)	NA	

FAF to MAP 6.1 NM					
Knots	60	90	120	150	180
Min:Sec	6:06	4:04	3:03	2:26	2:02

NE-1, 28 NOV 2024 to 26 DEC 2024

NE-1, 28 NOV 2024 to 26 DEC 2024