

LOC I-IMT 111.5	APP CRS 190°	Rwy Idg 6376
		TDZE 1182
		Apt Elev 1182

LOC/DME BC RWY 19

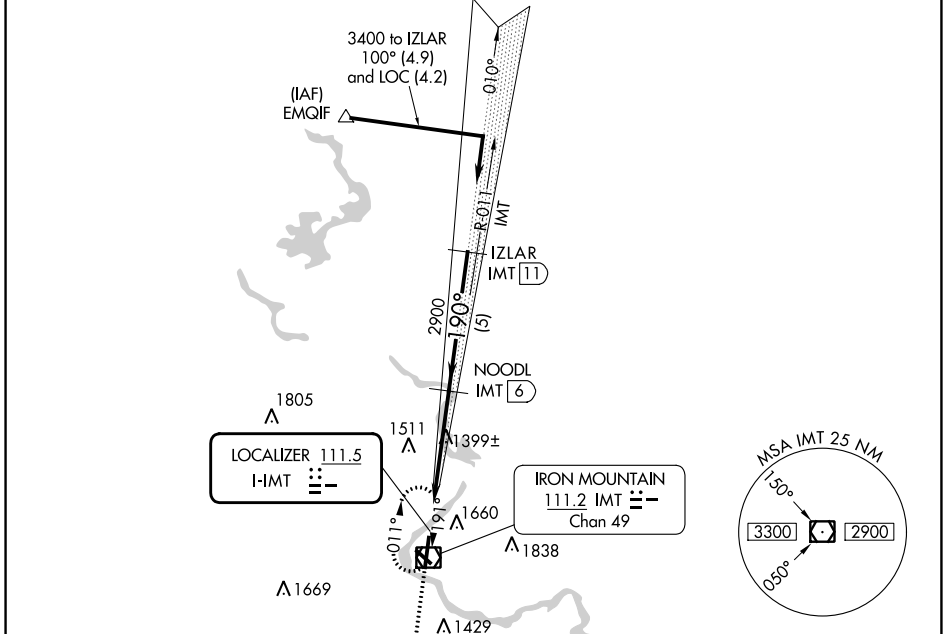
FORD (IMT)

DME required.

⚠ Circling NA northeast of Rwy 19 and 31. DME from IMT VOR/DME. Simultaneous reception of I-IMT and IMT DME required. Rwy 19 helicopter visibility reduction below 1 SM NA. Straight-in Rwy 19 NA at night. Circling Rwy 13, 19, 31 NA at night. When local altimeter setting not received, use Escanaba altimeter setting and increase all MDA 180 feet; increase S-19 Cat C/D visibilities ½ SM and Circling Cat C/D visibility ¾ SM.

MISSED APPROACH: Climb to 3100 then left turn direct IMT VOR/DME and hold.

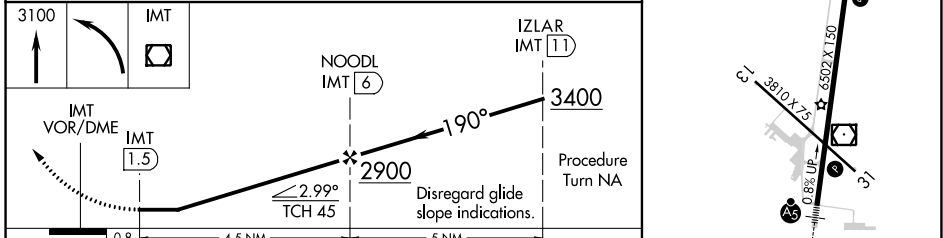
ASOS 119.025	MINNEAPOLIS CENTER 121.25 322.5	UNICOM 122.8 (CTAF) 0
------------------------	---	---------------------------------



ELEV 1182	TDZE 1182
-----------	-----------



BACK COURSE



CATEGORY	A	B	C	D
S-19	1660-1	478 (500-1)	1660-1 3/8	478 (500-1 3/8)
C CIRCLING	1660-1 478 (500-1)	1780-1 598 (600-1)	1780-1 1/2 598 (600-1 1/2)	1840-2 658 (700-2)

MIRL Rwy 13-31
HIRL Rwy 1-19
REIL Rwy 19 and 31

EC-1, 28 NOV 2024 to 26 DEC 2024

EC-1, 28 NOV 2024 to 26 DEC 2024