

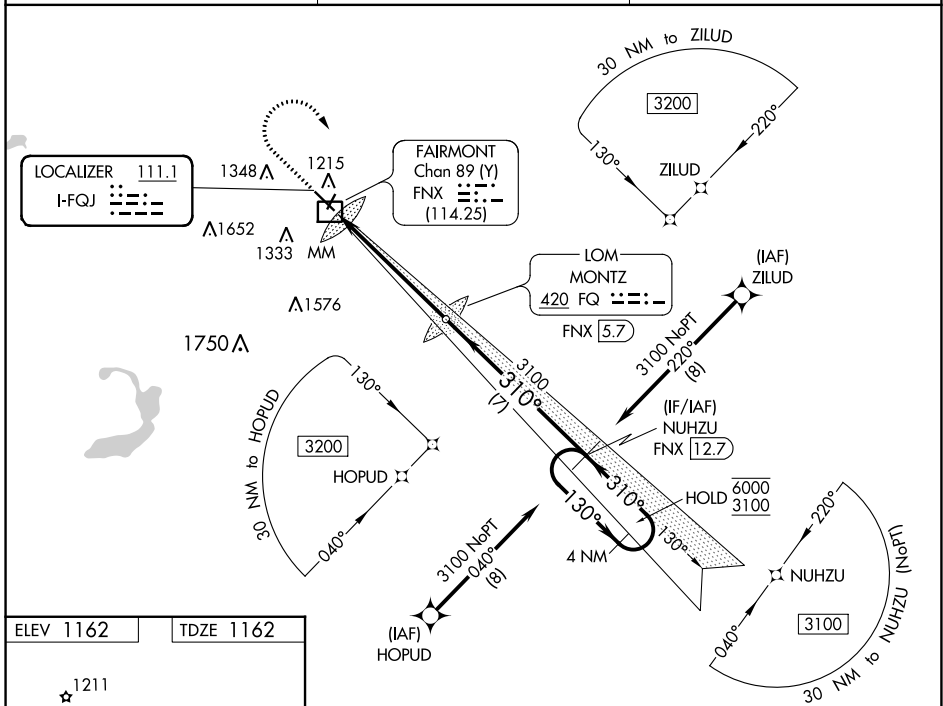
LOC I-FQJ 111.1	APP CRS 310°	Rwy Idg TDZE Apt Elev	5503 1162 1162
---------------------------	------------------------	-----------------------------	---

ILS or LOC RWY 31

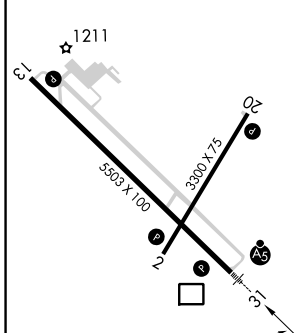
FAIRMONT MUNI (F.R.M)

RNP APCH-GPS. ADF or DME required, LOC only.		MALSR	MISSED APPROACH: Climb to 1800 then climbing right turn to 3100 direct NUHZU and hold.
▼ ▲ NA	For inop ALS, increase S-ILS-31 all Cats visibility to 7/8 SM and S-LOC 31 Cats C/D visibility to 1 3/8 SM. DME from FNX DME. DME use requires simultaneous reception of I-FQJ and FNX DME. Autopilot coupled approach NA below 1480 MSL.		

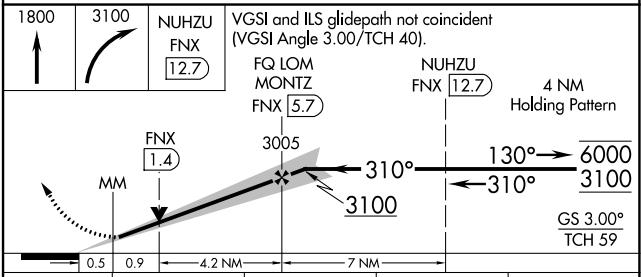
AWOS-3PT 120.025	MINNEAPOLIS CENTER 127.75 257.7	UNICOM 122.8 (CTAF)
----------------------------	---	-------------------------------



ELEV 1162	TDZE 1162
-----------	-----------



HIRL Rwy 13-31	MIRL Rwy 2-20	REIL Rwy 2, 13 and 20			
FAF to MAP 5.6 NM					
Knots	60	90	120	150	180
Min:Sec	5:36	3:44	2:48	2:14	1:52



CATEGORY	A	B	C	D
S-ILS 31	1480-1/2 318 (400-1/2)			
S-LOC 31	1640-1/2 478 (500-1/2)		1640-1 478 (500-1)	
☑ CIRCLING	1660-1 498 (500-1)		1980-2 1/2 818 (900-2 1/2) 1980-2 3/4 818 (900-2 3/4)	

NC-1, 28 NOV 2024 to 26 DEC 2024

NC-1, 28 NOV 2024 to 26 DEC 2024