

WAAS CH <b>77701</b> <b>W27A</b>	APP CRS <b>274°</b>	Rwy Idg TDZE Apt Elev	<b>5000</b> <b>15</b> <b>19</b>
--	------------------------	-----------------------------	---------------------------------------

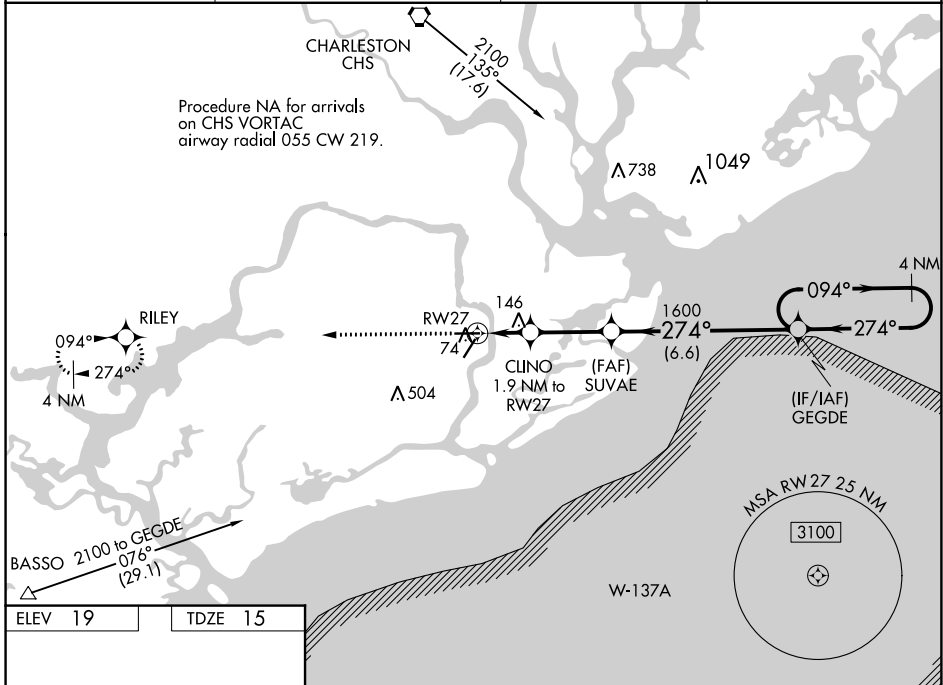
# RNAV (GPS) RWY 27

CHARLESTON EXEC (JZI)

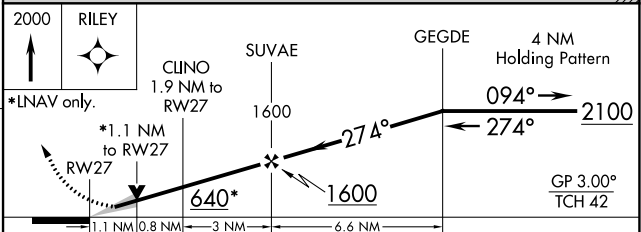
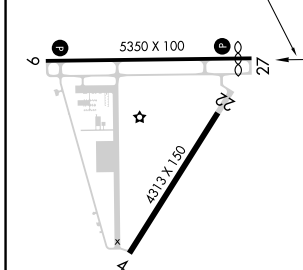
**⚠** For uncompensated Baro-VNAV systems, LNAV/VNAV NA below -15°C (5°F) or above 54°C (130°F). When local altimeter setting not received, use Charleston AFB/Intl altimeter setting and increase LPV DA to 297 feet, increase LNAV/VNAV DA to 335 feet, increase all MDAs 40 feet; increase LPV all Cats, LNAV/VNAV all Cats, and LNAV Cats C/D visibility 1/8 SM, and Circling visibility Cats C/D 1/4 SM. Baro-VNAV and VDP NA when using Charleston AFB/Intl altimeter setting.

**MISSED APPROACH:**  
Climb to 2000 direct RILEY and hold.

AWOS-3 <b>123.775</b>	CHARLESTON APP CON <b>120.7 306.925</b>	CLNC DEL <b>119.85</b>	UNICOM <b>122.8 (CTAF) 0</b>
--------------------------	--	---------------------------	---------------------------------



ELEV 19	TDZE 15
---------	---------



CATEGORY	A	B	C	D
LPV DA		265-7/8	250 (300-7/8)	
LNAV/VNAV DA		303-1	288 (300-1)	
LNAV MDA	400-1	385 (400-1)	400-1 1/8	385 (400-1 1/8)
CIRCLING	460-1 441 (500-1)	480-1 461 (500-1)	860-2 1/2 841 (900-2 1/2)	860-2 3/4 841 (900-2 3/4)

REIL Rwy 9 and 27 0  
MIRL Rwy 4-22 0  
HIRL Rwy 9-27 0

SE-2, 28 NOV 2024 to 26 DEC 2024

SE-2, 28 NOV 2024 to 26 DEC 2024