

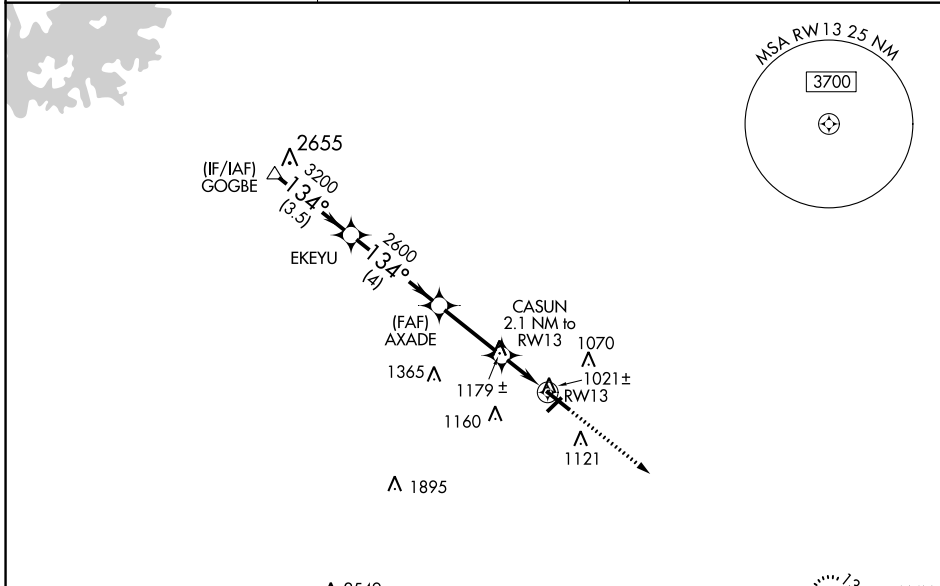
WAAS CH <b>90305</b> <b>W13A</b>	APP CRS <b>134°</b>	Rwy Idg TDZE Apt Elev	<b>5100</b> <b>933</b> <b>934</b>
--	------------------------	-----------------------------	---

# RNAV (GPS) RWY 13

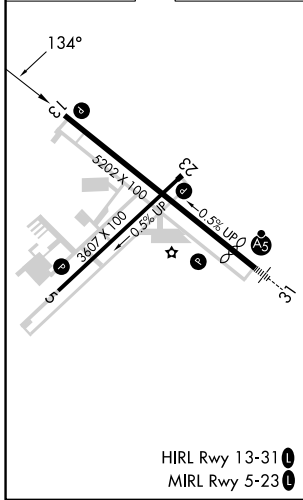
BARROW COUNTY (WDR)

RNP APCH.	MISSED APPROACH: Climb to 3000 direct CADEB and hold.
-----------	---

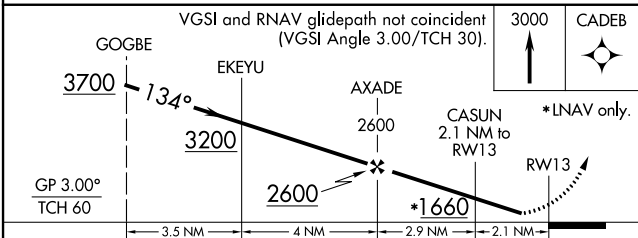
AWOS-3 <b>118.575</b>	ATLANTA APP CON ★ <b>132.475 291.1</b>	UNICOM <b>123.0(CTAF) 0</b>
--------------------------	---	--------------------------------



ELEV 934	<b>D</b>	TDZE 933
----------	----------	----------



CADEB	4 NM
-------	------



CATEGORY	A	B	C	D
LPV DA		1207-1	274 (300-1)	
LNNAV/VNAV DA		1422-1 $\frac{3}{8}$	489 (500-1 $\frac{3}{8}$ )	
LNNAV MDA		1300-1	367 (400-1)	
CIRCLING	1400-1 466 (500-1)	1580-1 646 (700-1)	1660-2 726 (800-2)	1660-2 $\frac{1}{4}$ 726 (800-2 $\frac{1}{4}$ )

SE-4, 28 NOV 2024 to 26 DEC 2024

SE-4, 28 NOV 2024 to 26 DEC 2024