

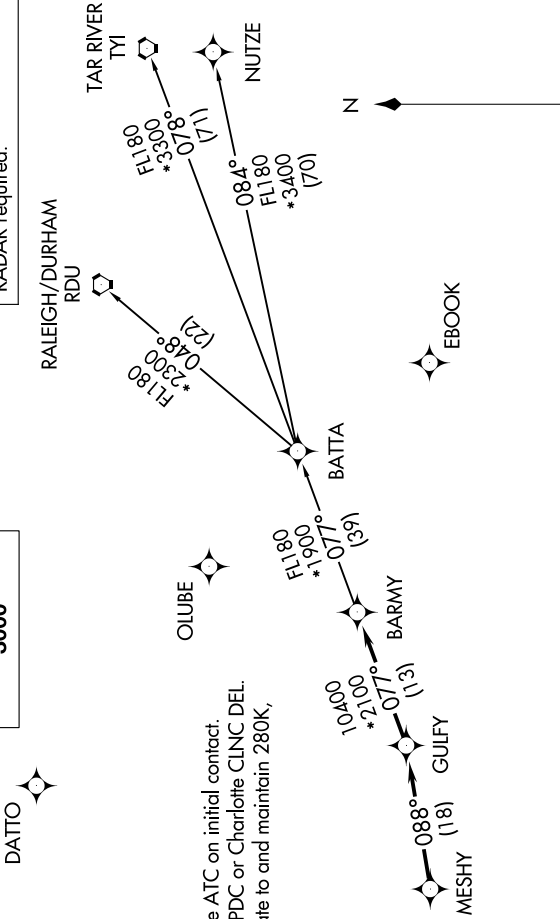
BARMY FIVE DEPARTURE (RNAV)

SE-2, 28 NOV 2024 to 26 DEC 2024

CHARLOTTE DEP CON
120.05 307.8
ASOS
120.775
UNICOM
123.05

TOP ALTITUDE:
3000

RNAV 1 - DME/DME/IRU or GPS.
RADAR required.



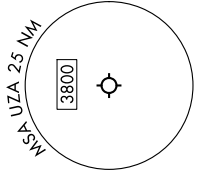
NOTE: For turbo jets only.
 NOTE: If unable to accept climb rates, advise ATC on initial contact.
 NOTE: Transponder code will be issued via PDC or Charlotte CLNC DEL.
 NOTE: Upon reaching 10000 MSL, accelerate to and maintain 280K, if unable advise ATC.

DEPARTURE ROUTE DESCRIPTION

Climb on heading assigned by ATC on RADAR vectors to MESHY, then on depicted route to BARMY. Then on assigned transition. Maintain 3000, expect clearance to filed altitude within 10 minutes after departure.

NUTZE TRANSITION (BARMY5.NUTZE)
RALEIGH/DURHAM TRANSITION (BARMY5.RDU)
TAR RIVER TRANSITION (BARMY5.TYI)

TAKEOFF MINIMUMS
Rwys 2, 20: Standard.



NOTE: Chart not to scale.

SE-2, 28 NOV 2024 to 26 DEC 2024