

| | | | |
|-----------------------|-------------|----------|-------------|
| LOC/DME I- <u>UZA</u> | APP CRS | Rwy ldg | 5500 |
| 108.5 | 016° | TDZE | 666 |
| Chan 22 | | Apt Elev | 666 |

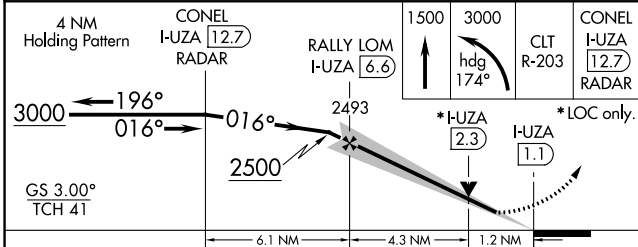
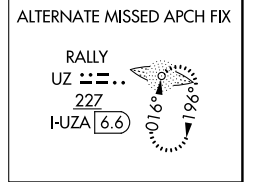
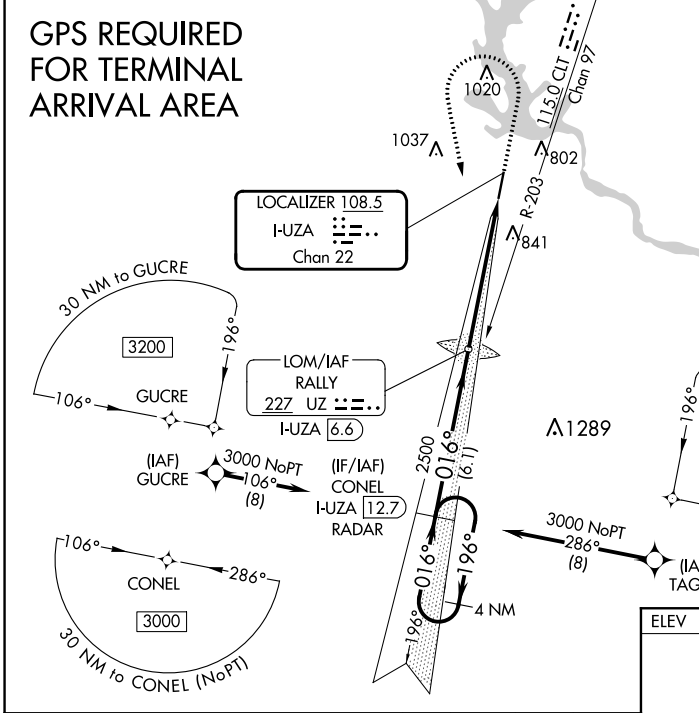
ILS Y or LOC Y RWY 2

ROCK HILL/YORK COUNTY/BRYANT FLD (UZA)

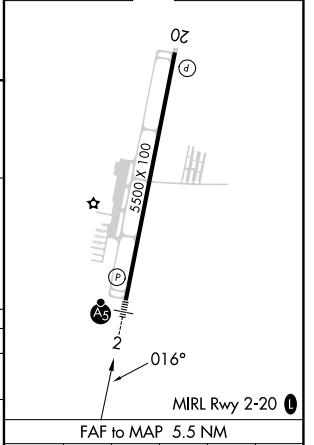
⚠ ADF or DME required. VDP NA with Charlotte/Douglas Intl altimeter setting. When local altimeter setting not received, use Charlotte/Douglas Intl altimeter setting and increase all DA 45 feet and all MDA 60 feet. Increase S-LOC 2 Cat C/D visibility ¼ mile. For inop MALSR, increase S-LOC 2 Cat C/D visibility to 1½ mile. For inop MALSR, when using Charlotte/Douglas Intl altimeter setting, increase S-LOC 2 Cat C/D visibility to 1½ mile.

MALSRL
 MALSR
MISSED APPROACH: Climb to 1500 then climbing left turn to 3000 on heading 174° and CLT VOR/DME R-203 to CONEL/I-UZA 12.7 DME/RADAR and hold.

| | | | |
|------------------------|--|-----------------------|----------------------------------|
| ASOS 120.775 | CHARLOTTE APP CON 120.05 307.8 | GCO 121.725 | UNICOM 123.05 (CTAF) 0 |
|------------------------|--|-----------------------|----------------------------------|



| | |
|----------|----------|
| ELEV 666 | TDZE 666 |
|----------|----------|



| CATEGORY | A | B | C | D |
|-------------------|-----------------------|-----------------------|-----------------------|-------------------------|
| S-ILS 2 | 866-½ | | 200 (200-½) | |
| S-LOC 2 | 1080-½ | 414 (500-½) | 1080-¾ | 414 (500-¾) |
| C CIRCLING | 1140-1 474 (500-1) | 1160-1 494 (500-1) | 1340-2 674 (700-2) | 1340-2¼ 674 (700-2¼) |

| | | | | | |
|---------|------|------|------|------|------|
| Knots | 60 | 90 | 120 | 150 | 180 |
| Min:Sec | 5:30 | 3:40 | 2:45 | 2:12 | 1:50 |

SE-2, 28 NOV 2024 to 26 DEC 2024

SE-2, 28 NOV 2024 to 26 DEC 2024