

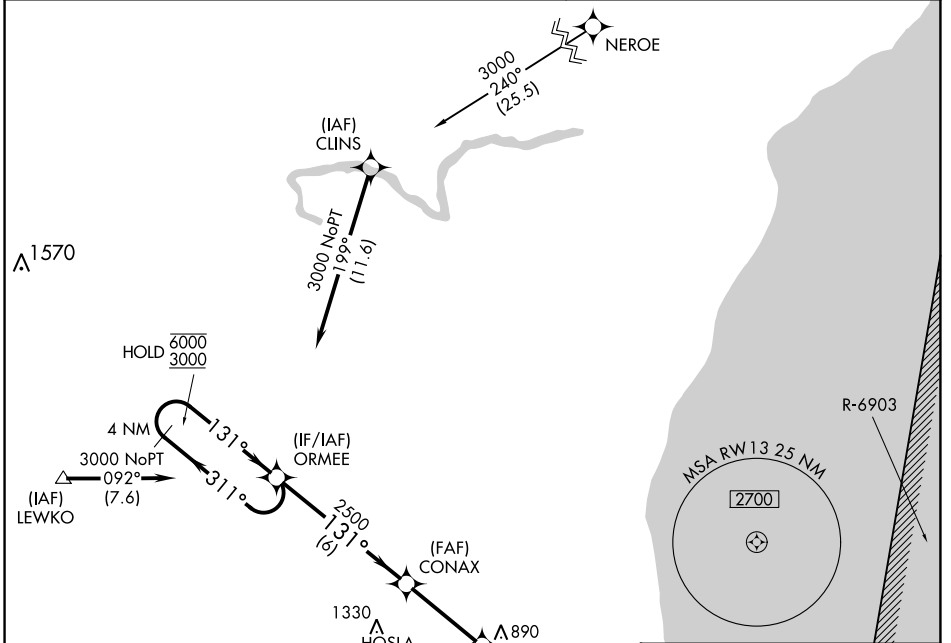
APP CRS	Rwy Idg	5002
131°	TDZE	755
	Apt Elev	755

RNAV (GPS) RWY 13

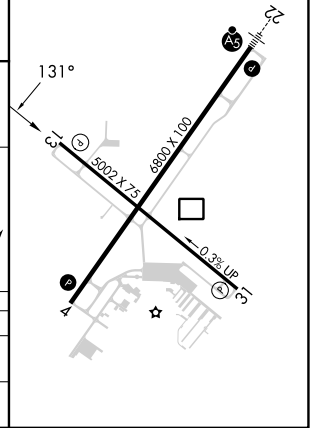
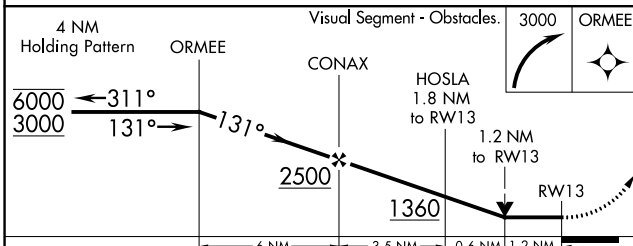
SHEBOYGAN COUNTY MEML INTL (SBM)

RNP APCH.		MISSED APPROACH: Climbing right turn to 3000 direct ORMEE and hold.		
▼ Rwy 13 helicopter visibility reduction below 3/4 SM NA.				

ASOS 118.425	MILWAUKEE APP CON 127.375 263.075	GCO 121.725	CLNC DEL 127.375	UNICOM 122.7 (CTAF)
------------------------	---	-----------------------	----------------------------	-------------------------------



ELEV	755	TDZE	755
REIL Rwy 4	4	MIRL Rwy 13-31	1
HIRL Rwy 4-22	1		



CATEGORY	A	B	C	D
LNVA MDA	1160-1	405 (500-1)	1160-1¼	405 (500-1¼)
CIRCLING	1200-1 445 (500-1)	1220-1 465 (500-1)	1240-1½ 485 (500-1½)	1360-2 605 (700-2)

EC-3, 28 NOV 2024 to 26 DEC 2024

EC-3, 28 NOV 2024 to 26 DEC 2024