

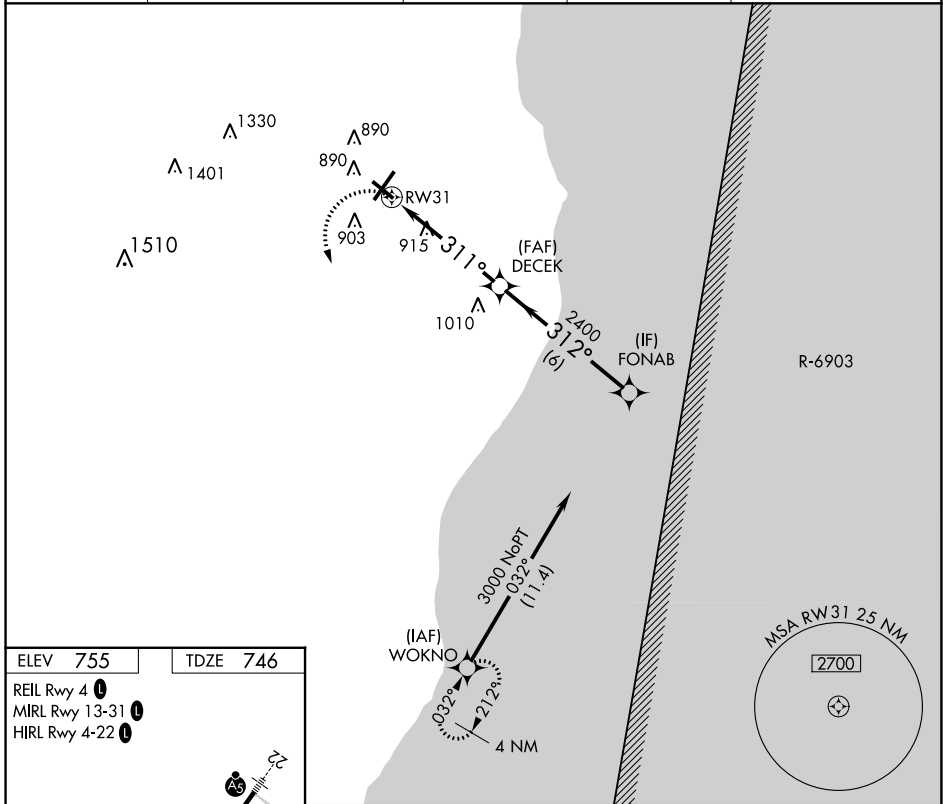
APP CRS 311°	Rwy Idg 5002
	TDZE 746
	Apt Elev 755

RNAV (GPS) RWY 31

SHEBOYGAN COUNTY MEML INTL (SBM)

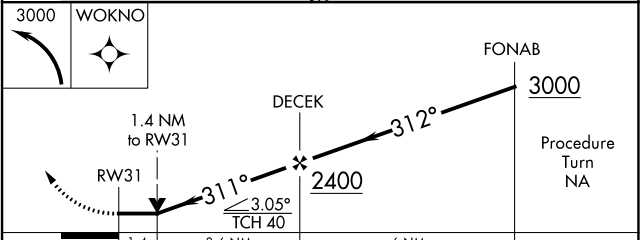
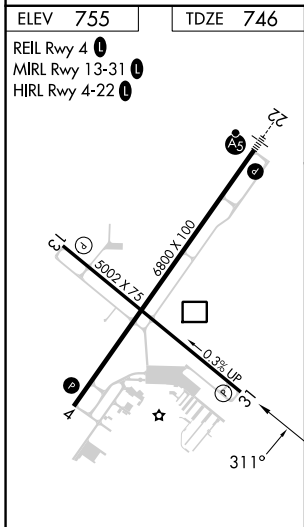
RNP APCH - GPS.		MISSED APPROACH: Climbing left turn to 3000 direct WOKNO and hold.		
Rwy 31 helicopter visibility reduction below 3/4 SM NA.				

ASOS 118,425	MILWAUKEE APP CON 127,375 263,075	GCO 121,725	CLNC DEL 127,375	UNICOM 122.7 (CTAF)
------------------------	---	-----------------------	----------------------------	-------------------------------



EC-3, 28 NOV 2024 to 26 DEC 2024

EC-3, 28 NOV 2024 to 26 DEC 2024



CATEGORY	A	B	C	D
LNAV MDA	1260-1	514 (600-1)	1260-1 3/8	514 (600-1 3/8)
CIRCLING	1260-1	505 (600-1)	1260-1 1/2	1360-2
			505 (600-1 1/2)	605 (700-2)