

LOC I-GCN <b>108.9</b>	APP CRS <b>030°</b>	Rwy Idg <b>8999</b>
		TDZE <b>6556</b>
		Apt Elev <b>6609</b>

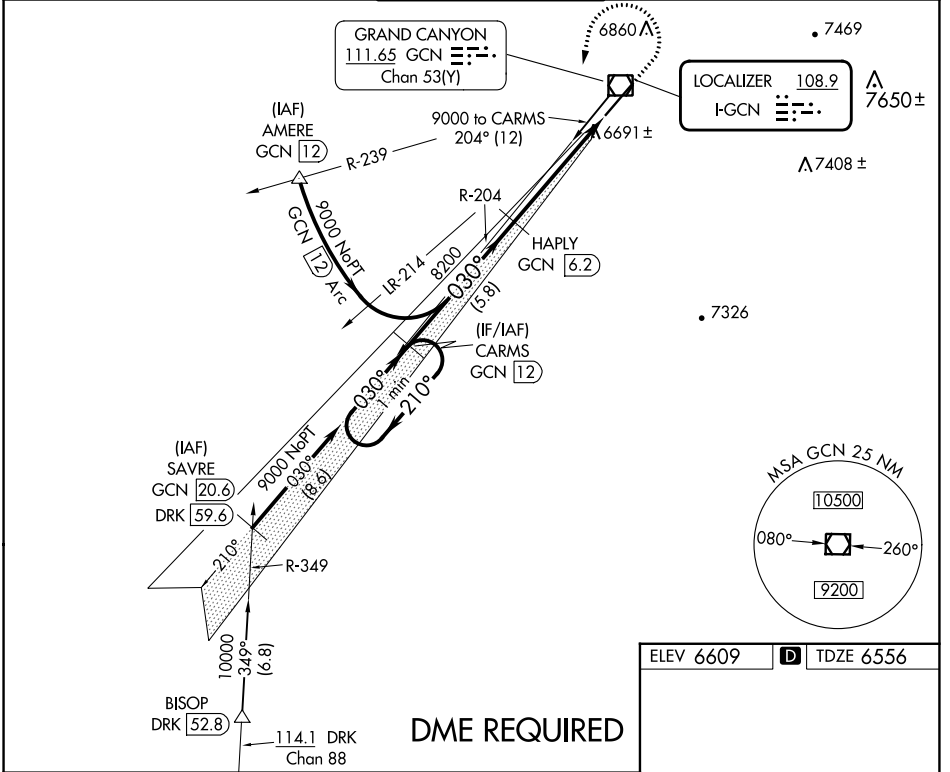
# ILS or LOC RWY 3

GRAND CANYON NTL PARK (GCN)

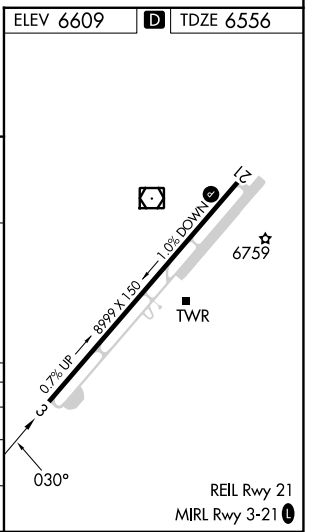
**⚠** DME from GCN VOR/DME. Simultaneous reception of I-GCN and GCN DME required. DME required.

MISSED APPROACH: Climb to 7000 then climbing left turn to 9000 on heading 180° and on GCN VOR/DME R-204 direct CARMS/GCN 12 DME and hold.

ATIS <b>124.3</b>	LOS ANGELES CENTER <b>124.85 319.2</b>	CANYON TOWER* <b>119.0 (CTAF) 0</b>	GND CON <b>121.9</b>	UNICOM <b>122.95</b>
----------------------	---	--	-------------------------	-------------------------



One Minute Holding Pattern	CARMS GCN 12	HAPLY GCN 6.2	7000	9000	GCN R-204	CARMS GCN 12
	9000 ← 210°	→ 030°	↑	hdg 180°	* GCN 2.3	* LOC only.
GS 3.00° TCH 58	8200	5.8 NM	3.9 NM	1.2 NM	GCN 1.2	
CATEGORY	A	B	C	D		
S-ILS 3		6795-¾	239 (200-¾)			
S-LOC 3	6960-1	404 (400-1)	6960-1⅛	404 (400-1⅛)		
CIRCLING	7140-1 531 (600-1)	7200-1 591 (600-1)	7280-2 671 (700-2)	7620-3 1011 (1100-3)		



SW-4, 28 NOV 2024 to 26 DEC 2024

SW-4, 28 NOV 2024 to 26 DEC 2024