

APP CRS	Rwy Idg	6003
360°	TDZE	213
	Apt Elev	213

RNAV (GPS) RWY 35

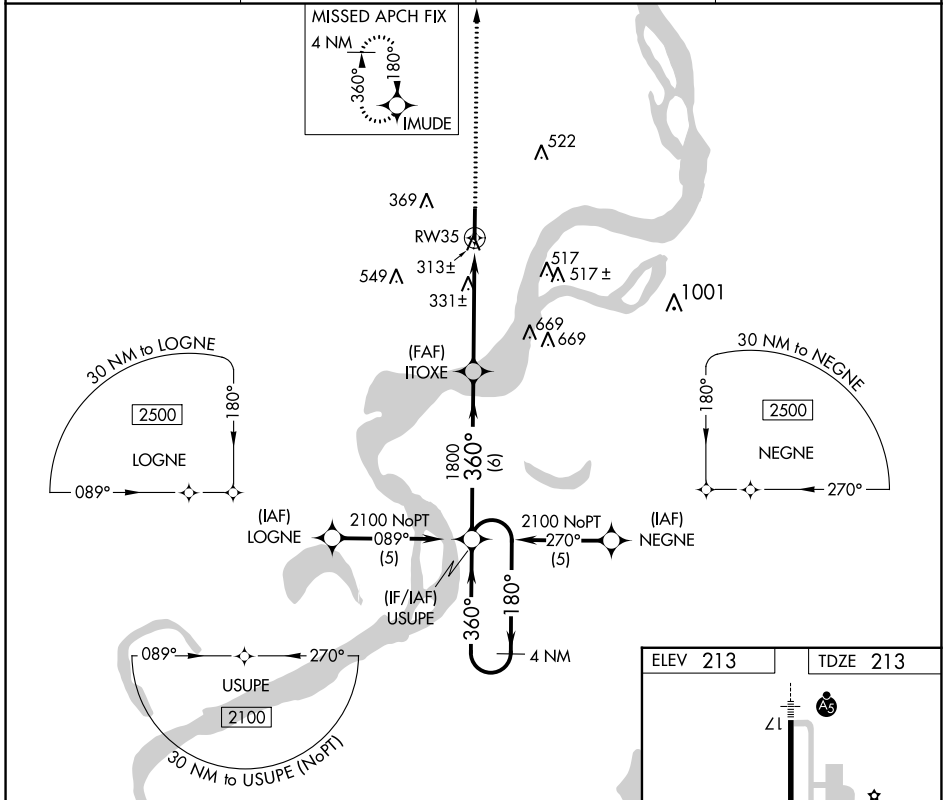
WEST MEMPHIS MUNI (A W M)

RNP APCH.

When local altimeter setting not received, use Memphis Intl altimeter setting; increase all MDA 60 feet, increase LNAV Cat C and D and Circling Cat C and D visibility ¼ SM. Rwy 35 helicopter visibility reduction below ¾ SM NA.

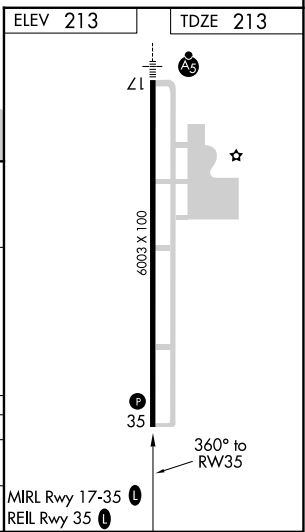
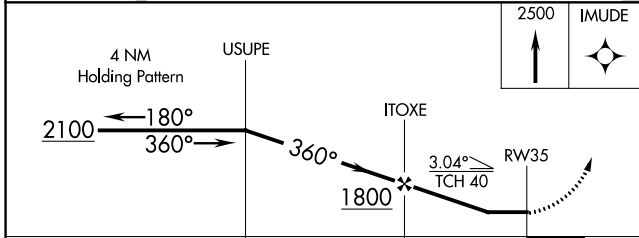
MISSED APPROACH: Climb to 2500 direct IMUDE and hold.

ASOS 118.175	MEMPHIS APP CON 119.1 291.6	CLNC DEL 121.7	UNICOM 123.05 (CTAF)
------------------------	---------------------------------------	--------------------------	--------------------------------



SC-1, 28 NOV 2024 to 26 DEC 2024

SC-1, 28 NOV 2024 to 26 DEC 2024



CATEGORY	A	B	C	D
LNAV MDA	600-1	387 (400-1)	600-1 1/8 387 (400-1 1/8)	600-1 1/4 387 (400-1 1/4)
CIRCLING	640-1 427 (500-1)	740-1 527 (600-1)	800-1 1/2 587 (600-1 1/2)	920-2 1/4 707 (800-2 1/4)