

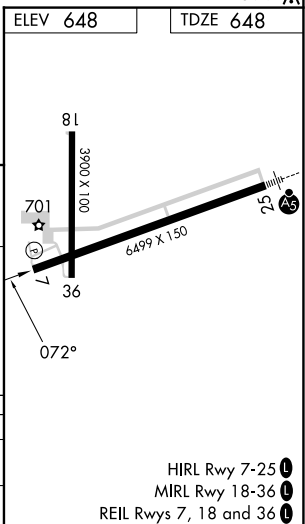
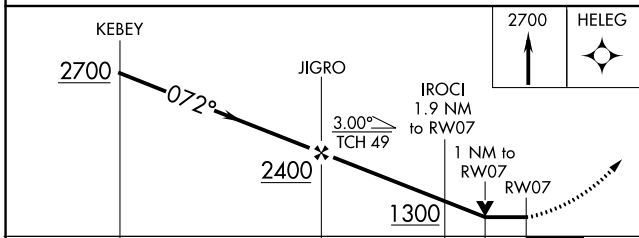
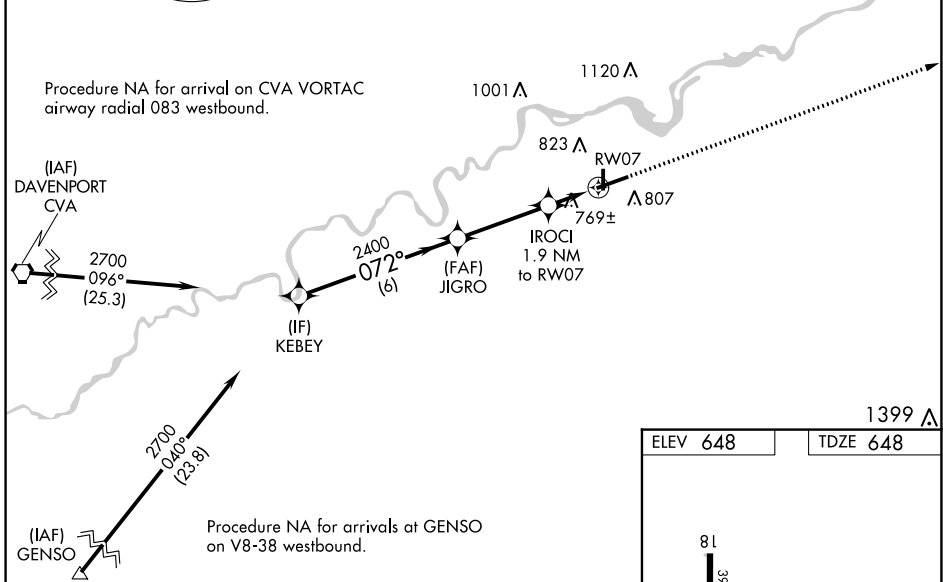
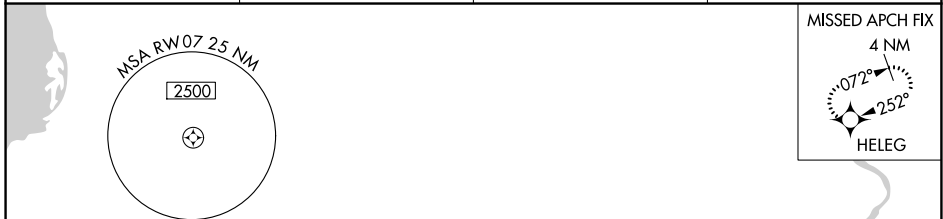
APP CRS	Rwy Idg	<b>6499</b>
<b>072°</b>	TDZE	<b>648</b>
	Apt Elev	<b>648</b>

# RNAV (GPS) RWY 7

WHITESIDE COUNTY/JOS H BITTORF FLD (SQI)

RNP APCH -GPS.		MISSED APPROACH: Climb to 2700 direct HELEG and hold.	
		Rwy 7 helicopter visibility reduction below 3/4 SM NA.	

AWOS-3PT <b>119.175</b>	ROCKFORD APP CON <b>126.0 327.0</b>	CLNC DEL <b>128.0</b>	UNICOM <b>123.0 (CTAF) 0</b>
----------------------------	--	--------------------------	---------------------------------



CATEGORY	A	B	C	D
LNAV MDA	1020-1 372 (400-1)			
CIRCLING	1140-1 492 (500-1)	1160-1½ 512 (600-1½)	1480-2¾ 832 (900-2¾)	

EC-3, 28 NOV 2024 to 26 DEC 2024

EC-3, 28 NOV 2024 to 26 DEC 2024