

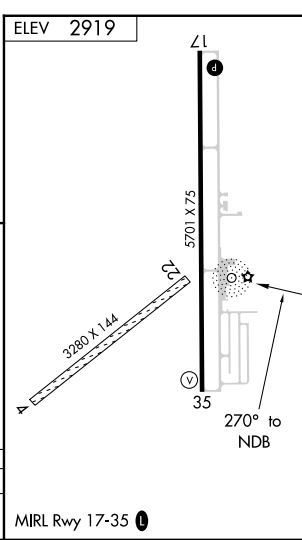
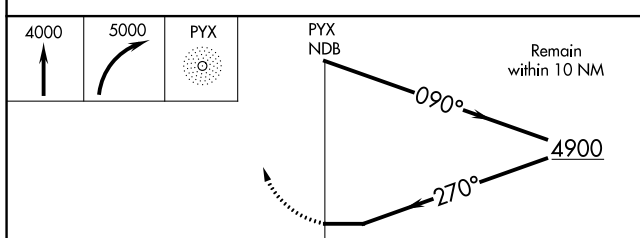
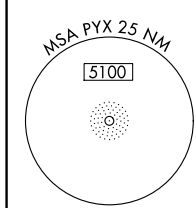
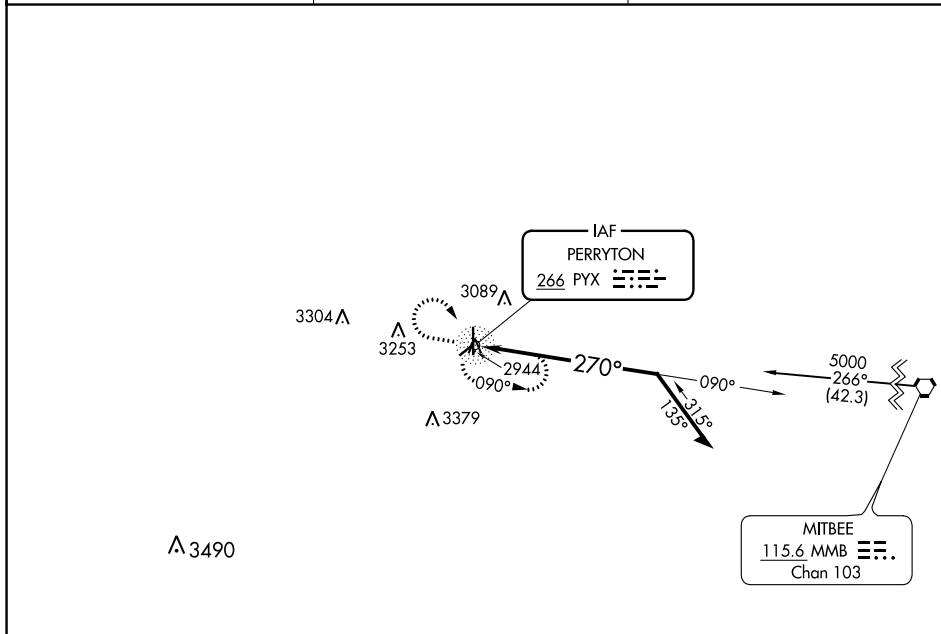
NDB PYX <b>266</b>	APP CRS <b>270°</b>	Rwy Idg TDZE Apt Elev	<b>N/A</b> <b>N/A</b> <b>2919</b>
-----------------------	------------------------	-----------------------------	---

**NDB-A**  
PERRYTON OCHILTREE COUNTY (PYX)

**⚠ NA** When local altimeter setting not received, use Gage altimeter setting and increase all MDA 220 feet and Cat B visibility 1/4 mile. Circling NA to Rwy 4 and 22.

**MISSED APPROACH:** Climb to 4000 then climbing right turn to 5000 direct PYX NDB and hold.

AWOS-3 <b>118.175</b>	KANSAS CITY CENTER <b>126.95 379.2</b>	UNICOM <b>122.8 (CTAF)</b>
--------------------------	---	-------------------------------



CATEGORY	A	B	C	D
<b>C</b> CIRCLING	3460-1 542 (600-1)	3580-1 662 (700-1)	NA	

SC-2, 28 NOV 2024 to 26 DEC 2024

SC-2, 28 NOV 2024 to 26 DEC 2024