

(RENTN3.RENTN) 24193

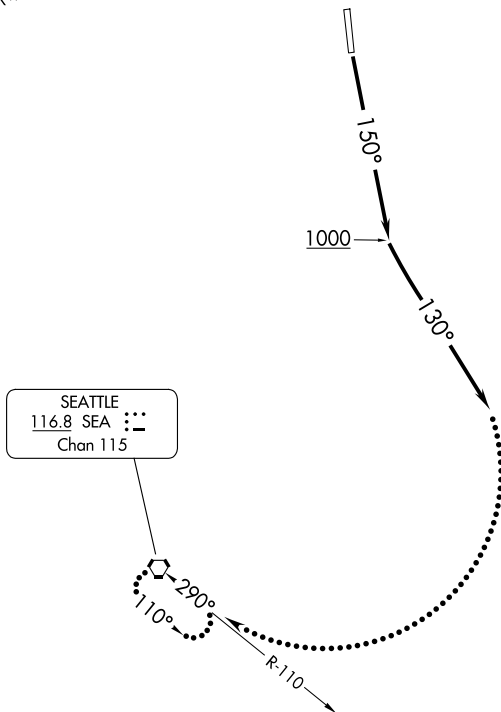
RENTN THREE DEPARTURE

AL-5396 (FAA)

RENTON MUNI (RNT)
RENTON, WASHINGTON

SEATTLE DEP CON
119.2 338.2
ATIS
126.95
GND CON
121.6 256.9
RENTON TOWER *
124.7 256.9

**TOP ALTITUDE:
3000**



NOTE: RADAR required.

TAKEOFF MINIMUMS

Rwy 16: Standard with a minimum climb of 405' per NM to 800.

Rwy 34: NA- ATC.

NOTE: Chart not to scale.



DEPARTURE ROUTE DESCRIPTION

TAKEOFF RUNWAY 16: Climb heading 150° to 1000, then climbing left turn heading 130°, expect RADAR vectors, maintain 3000, expect filed altitude within 5 minutes after departure.

LOST COMMUNICATIONS: If no contact with Seattle Departure Control within 3 minutes after departure, climbing right turn direct SEA VORTAC, continue climb-in SEA VORTAC holding pattern to cross SEA VORTAC at or above MEA/MCA for direction of flight before proceeding on course.

RENTN THREE DEPARTURE

(RENTN3.RENTN) 21JUL16

RENTON, WASHINGTON
RENTON MUNI (RNT)

NW-1, 28 NOV 2024 to 26 DEC 2024

NW-1, 28 NOV 2024 to 26 DEC 2024