

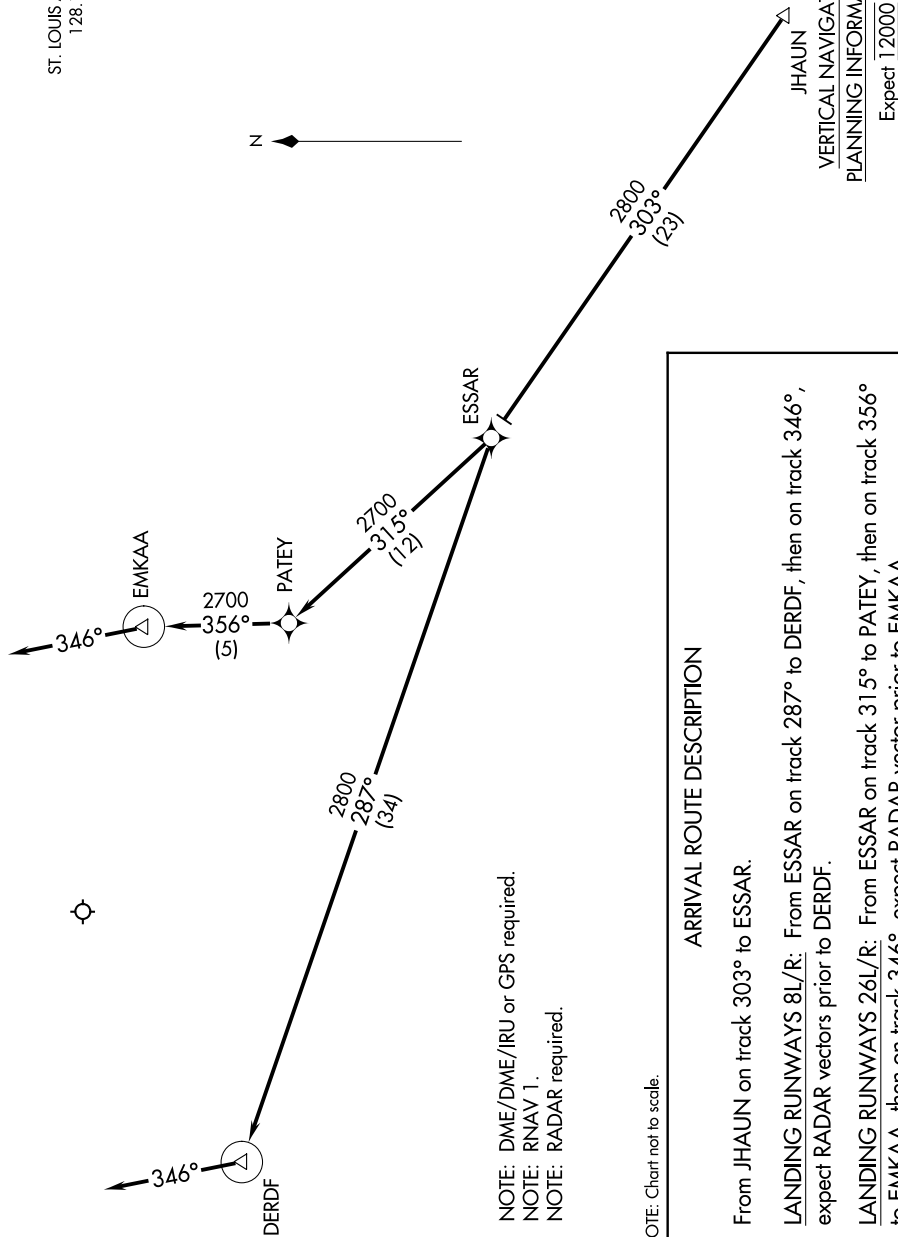
(JHAUN.JHAUN1) 16259

# JHAUN ONE ARRIVAL (RNAV)

AL-5400 (FAA)

SPIRIT OF ST LOUIS (STUS)  
ST. LOUIS, MISSOURI

ATIS  
134.8  
ST. LOUIS APP CON  
128.1 307.05



JHAUN  
VERTICAL NAVIGATION  
PLANNING INFORMATION  
Expect 12000

### ARRIVAL ROUTE DESCRIPTION

From JHAUN on track 303° to ESSAR.

LANDING RUNWAYS 8L/R: From ESSAR on track 287° to DERDF, then on track 346°, expect RADAR vectors prior to DERDF.

LANDING RUNWAYS 26L/R: From ESSAR on track 315° to PATEY, then on track 356° to EMKAA, then on track 346°, expect RADAR vector prior to EMKAA.

NOTE: DME/DME/IRU or GPS required.  
NOTE: RNAV 1.  
NOTE: RADAR required.

NOTE: Chart not to scale.

NC-3, 28 NOV 2024 to 26 DEC 2024

NC-3, 28 NOV 2024 to 26 DEC 2024

JHAUN ONE ARRIVAL (RNAV)  
(JHAUN.JHAUN1) 15NOV12

ST. LOUIS, MISSOURI  
SPIRIT OF ST LOUIS (STUS)