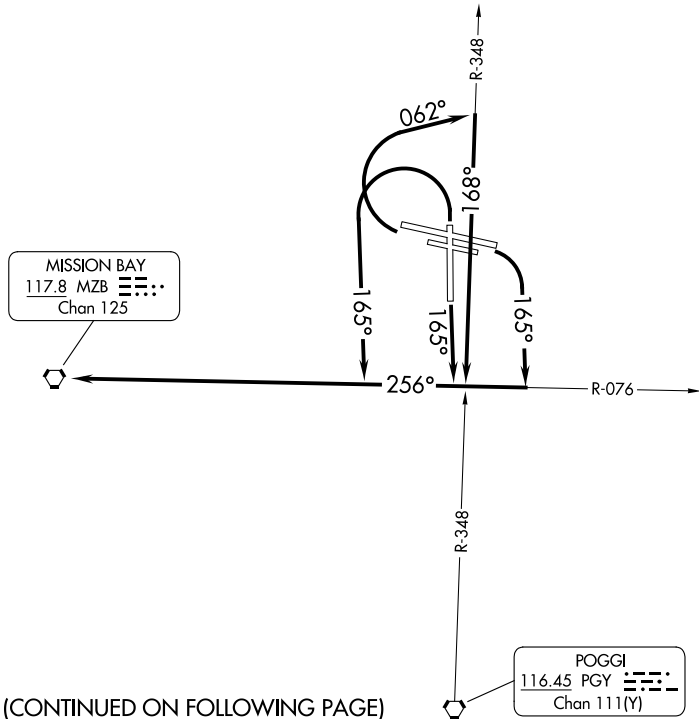


MISSION BAY TWO DEPARTURE (OBSTACLE)

TAKEOFF MINIMUMS

- Rwy 9L: 900-2¾ with minimum climb of 400' per NM to 3600, or 4400-3 for VCOA.
- Rwy 9R: 900-2¾ with minimum climb of 405' per NM to 3600, or 4400-3 for VCOA.
- Rwy 17: Standard with minimum climb of 440' per NM to 1800, or 4400-3 for VCOA.
- Rwys 27L/R: Standard with minimum climb of 500' per NM to 2000, or 4400-3 for VCOA.
- Rwy 35: Standard with minimum climb of 360' per NM to 1900, or 4400-3 for VCOA.

SOCAL DEP CON
124.35 279.625
GILLESPIE TOWER ★
120.7 257.8



(CONTINUED ON FOLLOWING PAGE)

NOTE: Chart not to scale.

DEPARTURE ROUTE DESCRIPTION

- TAKEOFF RUNWAYS 9L/R: Climbing right turn on heading 165°, thence . . .
 - TAKEOFF RUNWAY 17: Climb on heading 165°, thence . . .
 - TAKEOFF RUNWAYS 27L/R: Climbing right turn on heading 062° and on PGY R-348, thence . . .
 - TAKEOFF RUNWAY 35: Climbing left turn on heading 165°, thence . . .
- . . . on MZB R-076 to MZB VORTAC.

ALL RUNWAYS: Obtain ATC approval for VCOA when requesting IFR clearance.
Climb in visual conditions to cross Gillespie Fld at or above 4600 before proceeding on assigned route of flight.

SW-3, 28 NOV 2024 to 26 DEC 2024

SW-3, 28 NOV 2024 to 26 DEC 2024