

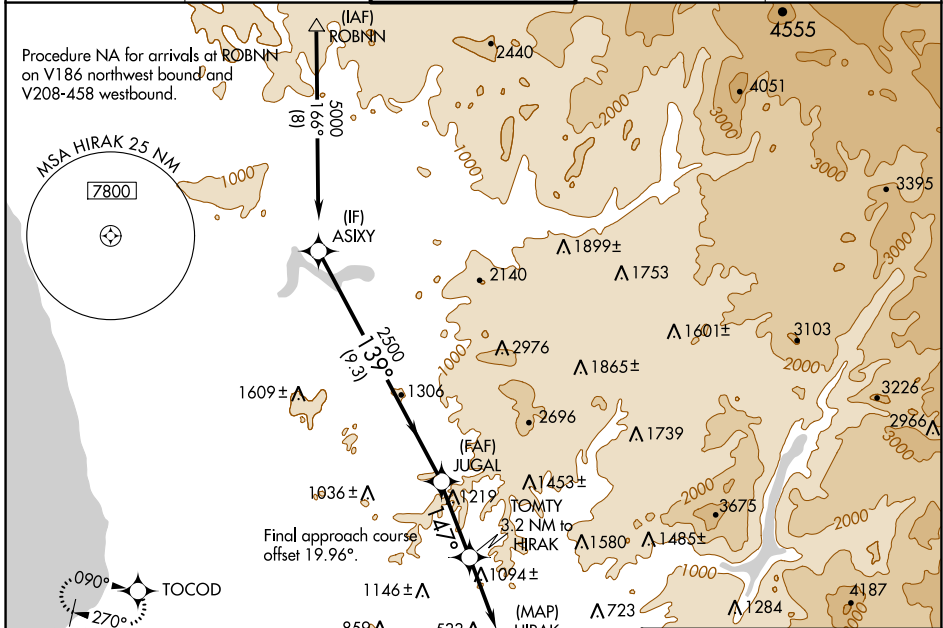
WAAS CH <b>86928</b> <b>W17A</b>	APP CRS <b>147°</b>	Rwy Idg TDZE Apt Elev	<b>3695</b> <b>379</b> <b>388</b>
--	------------------------	-----------------------------	---

# RNAV (GPS) RWY 17

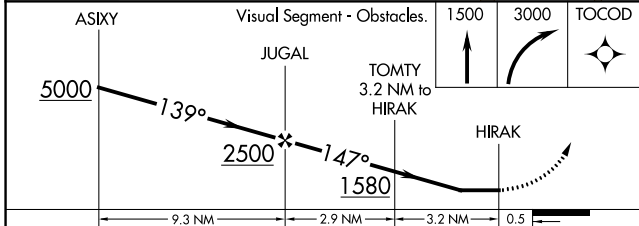
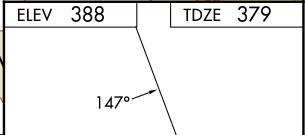
GILLESPIE FLD (SEE)

RNP APCH - GPS.	MISSED APPROACH: Climb to 1500 then climbing right turn to 3000 direct TOCOD and hold.
<p><b>⚠</b> Circling NA northeast of Rwy 17 and 27R. When local altimeter setting not received, use Miramar MCAS altimeter setting and increase all MDA 40 feet. Rwy 17 helicopter visibility reduction below 1 SM NA. Circling Rwy 27R, 35 NA at night.</p>	

ATIS <b>125.45</b>	SOCAL APP CON <b>124.35 279.625</b>	GILLESPIE TOWER* <b>120.7 (CTAF) 257.8</b>	GND CON <b>121.7</b>	CLNC DEL <b>125.1</b>
-----------------------	--	---	-------------------------	--------------------------



ELEV 388	TDZE 379
----------	----------



CATEGORY	A	B	C	D
LP MDA	1360-1¼ 981 (1000-1¼)	1360-1½ 981 (1000-1½)	1360-3	981 (1000-3)
LNAV MDA	1380-1¼ 1001 (1000-1¼)	1380-1½ 1001 (1000-1½)	1380-3	1001 (1000-3)
CIRCLING	1440-1¼ 1052 (1100-1¼)	1440-1½ 1052 (1100-1½)	1940-3	1552 (1600-3)

MIRL Rwy 9L-27R and 17-35	REIL Rwy 27R
---------------------------	--------------

SW-3, 28 NOV 2024 to 26 DEC 2024

SW-3, 28 NOV 2024 to 26 DEC 2024