

APP CRS 017°	Rwy Idg 6275
	TDZE 2442
	Apt Elev 2457

RNAV (GPS) RWY 2

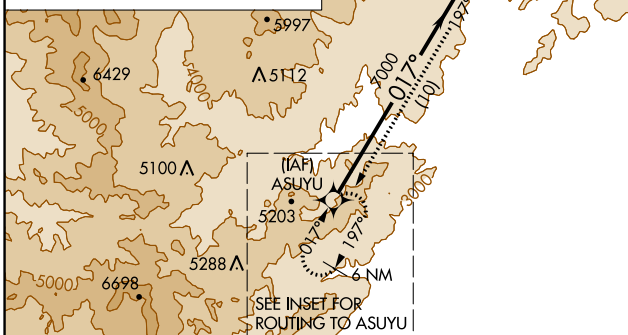
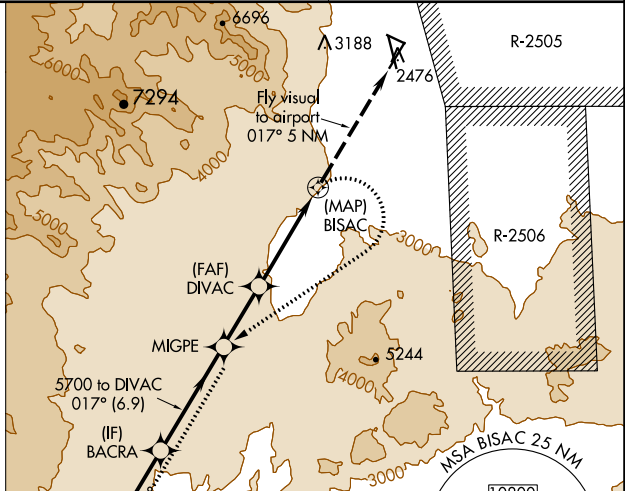
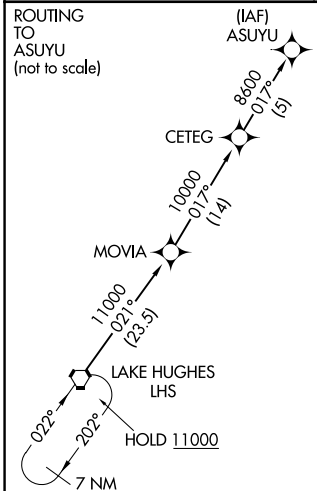
INYOKERN (IYK)

RNP APCH.

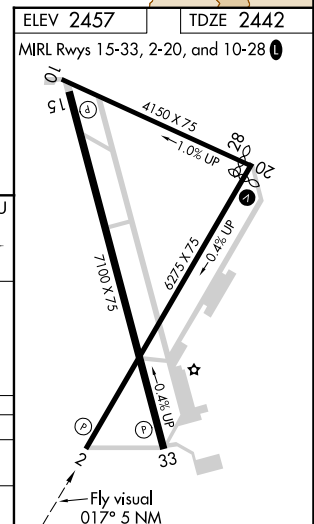
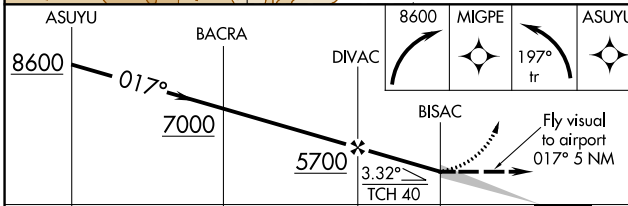
NA Circling Rwy 10, 33 NA at night. Circling NA east of Rwy 15-33. Circling NA at night west of Rwy 2 and 15. Except for operators with approved weather reporting service, use Mojave altimeter setting, if not available, procedure NA.

MISSED APPROACH: (Do not exceed 165K until SW bound) Climbing right turn to 8600 direct MIGPE then left turn on track 197° to ASUYU and hold.

MHV AWOS-3 132.225	JOSHUA APP CON 133.65 348.7	AUNICOM 122.8 (CTAF) 0
------------------------------	---------------------------------------	----------------------------------



SW-3, 28 NOV 2024 to 26 DEC 2024



CATEGORY	A	B	C	D
LNVA MDA	4200-3 1758 (1800-3)			
CIRCLING	4200-3 1743 (1800-3)	4780-3 2323 (2400-3)	5640-3 3183 (3200-3)	

SW-3, 28 NOV 2024 to 26 DEC 2024