

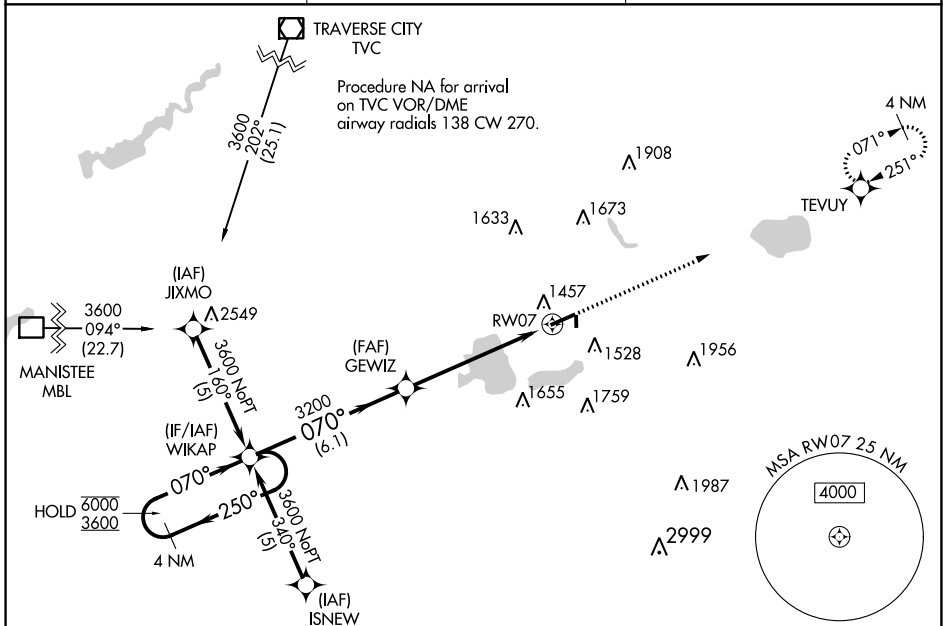
WAAS CH 86413 W07A	APP CRS 070°	Rwy Idg 5001 TDZE 1307 Apt Elev 1307
--	------------------------	---

RNAV (GPS) RWY 7

WEXFORD COUNTY (CAD)

RNP APCH - GPS.	MALSF	MISSED APPROACH: Climb to 3000 direct TEVUY and hold.
<p>⚠ Circling NA to Rwy 18 and 36. Inop table does not apply to LPV all Cats. ⚠ For uncompensated Baro-VNAV systems, LNAV/VNAV NA below -24°C or above 54°C. For inop ALS, increase LNAV/VNAV visibility all Cats to 1½ SM.</p>		

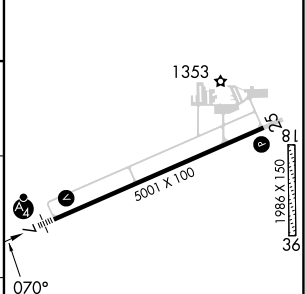
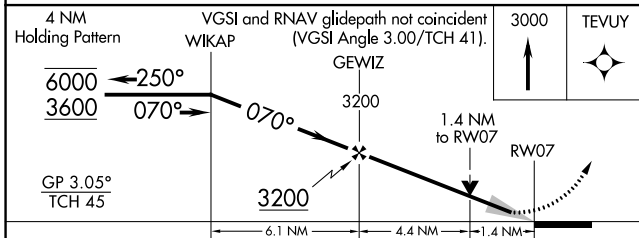
AWOS-3P 128.325	MINNEAPOLIS CENTER 132.9 338.3	UNICOM 122.8 (CTAF) 0
---------------------------	--	---------------------------------



EC-1, 28 NOV 2024 to 26 DEC 2024

EC-1, 28 NOV 2024 to 26 DEC 2024

ELEV 1307	TDZE 1307
-----------	-----------



CATEGORY	A	B	C	D
LPV DA		1507-¾	200 (200-¾)	
LNAV/VNAV DA		1761-1	454 (500-1)	
LNAV MDA	1780-¾	473 (500-¾)	1780-1½	473 (500-1½)
C CIRCLING	1840-1	533 (600-1)	2040-2 733 (800-2)	2060-2½ 753 (800-2½)

HIRL Rwy 7-25 0	REIL Rwy 7 and 25 0
------------------------	----------------------------