

WAAS CH 50236 W13A	APP CRS 126°	Rwy Idg TDZE Apt Elev	5007 975 975
--	------------------------	-----------------------------	---

RNAV (GPS) RWY 13

MARSHALLTOWN MUNI (MIW)

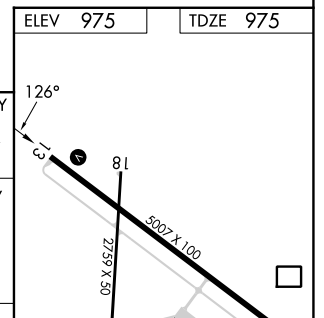
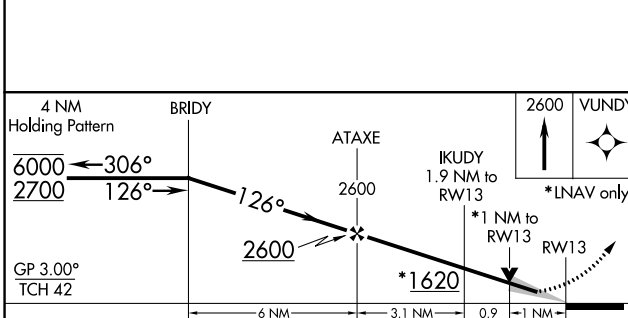
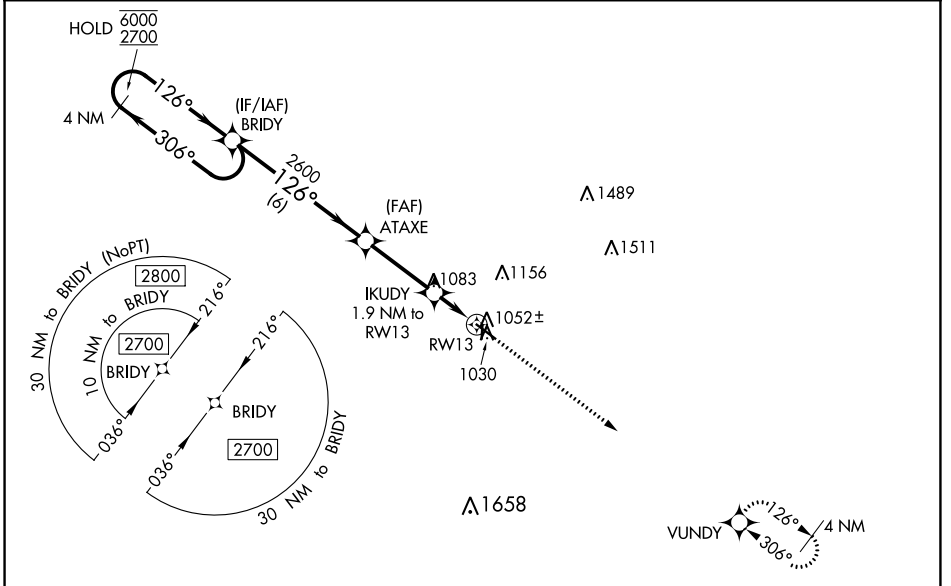
RNP APCH.

⚠ Circling Rwy 18, 36 NA at night. Baro-VNAV and VDP NA when using Grinnell altimeter setting. For uncompensated Baro-VNAV systems, LNAV/VNAV NA below -21°C or above 54°C.

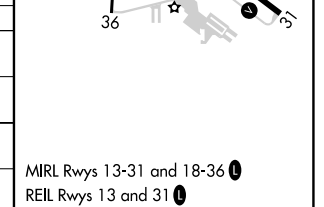
⚠ When local altimeter setting not received, use Grinnell altimeter setting and increase all DA 64 feet and all MDA 80 feet; increase LNAV Cats C/D and Circling Cat D visibility ¼ SM.

MISSED APPROACH: Climb to 2600 direct VUNDY and hold.

ASOS 128.325	WATERLOO APP CON * 120.9	CLNC DEL 120.9	UNICOM 122.8 (CTAF) 0
------------------------	------------------------------------	--------------------------	---------------------------------



CATEGORY	A	B	C	D
LPV DA		1225-1	250 (300-1)	
LNAV/VNAV DA		1225-1	250 (300-1)	
LNAV MDA		1320-1	345 (400-1)	
C CIRCLING	1400-1 425 (500-1)	1440-1 465 (500-1)	1460-1½ 485 (500-1½)	1840-2¾ 865 (900-2¾)



NC-3, 28 NOV 2024 to 26 DEC 2024

NC-3, 28 NOV 2024 to 26 DEC 2024