

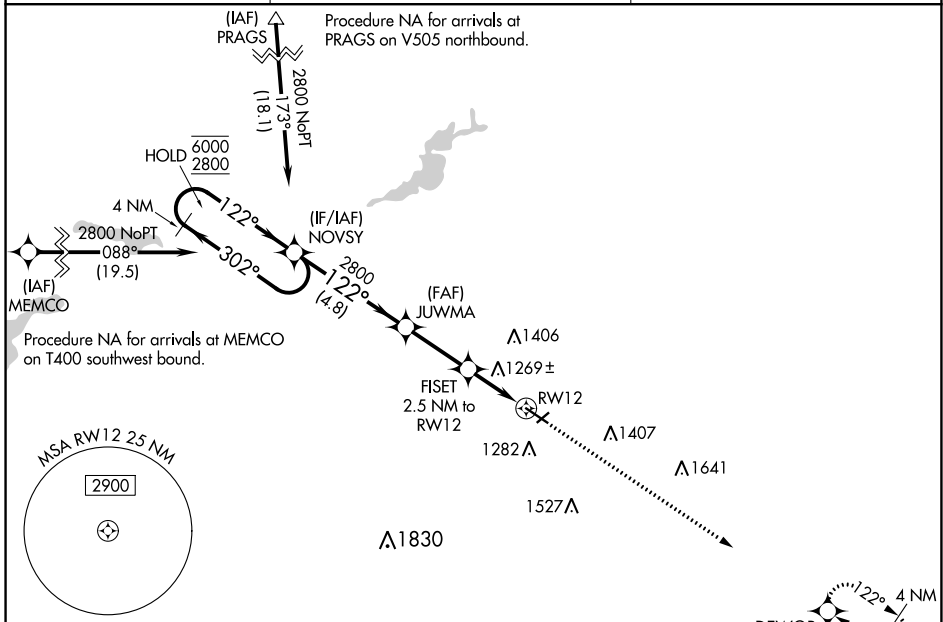
WAAS CH 82627 W12A	APP CRS 122°	Rwy Idg 5500 TDZE 1127 Apt Elev 1145
--	------------------------	---

RNAV (GPS) RWY 12

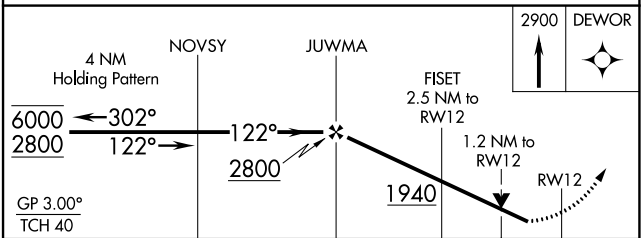
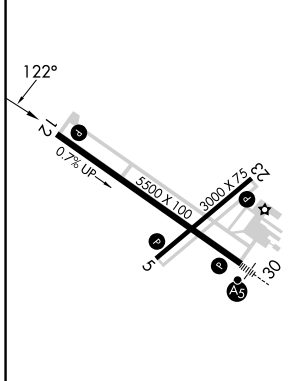
OWATONNA DEGNER RGNL (OWA)

RNP APCH - GPS.	MISSED APPROACH: Climb to 2900 direct DEWOR and hold.
<p>⚠ Rwy 12 helicopter visibility reduction below $\frac{3}{4}$ SM NA. For uncompensated Baro-VNAV systems, LNAV/VNAV NA below -17°C or above 54°C.</p>	

AWOS-3 128.325	ROCHESTER APP CON * 119.8 251.125	UNICOM 122.7 (CTAF)
--------------------------	---	-------------------------------



ELEV 1145	TDZE 1127
-----------	-----------



CATEGORY	A	B	C	D
LPV DA	1420- $\frac{7}{8}$ 293 (300- $\frac{7}{8}$)			
LNAV/VNAV DA	1400- $\frac{7}{8}$ 273 (300- $\frac{7}{8}$)			
LNAV MDA	1520-1 393 (400-1)		1520-1 $\frac{1}{8}$ 393 (400-1 $\frac{1}{8}$)	
C CIRCLING	1640-1 495 (500-1)	1700-1 555 (600-1)	1720-1 $\frac{1}{2}$ 575 (600-1 $\frac{1}{2}$)	1880-2 $\frac{1}{4}$ 735 (800-2 $\frac{1}{4}$)

MIRL Rwy 5-23 **⚠**
REIL Rws 5, 12, and 23 **⚠**
HIRL Rwy 12-30 **⚠**

NC-1, 28 NOV 2024 to 26 DEC 2024

NC-1, 28 NOV 2024 to 26 DEC 2024